

**Manchester City Council
Report for Information**

Report to: Neighbourhoods and Environment Scrutiny Committee
– 4 November 2020

Subject: Overview Report

Report of: Governance and Scrutiny Support Unit

Summary

This report provides the following information:

- Recommendations Monitor
- A summary of key decisions relating to the Committee's remit
- Items for Information - Scrutiny Covid Sitrep Update and Highways Social Value information that had been requested
- Work Programme

Recommendation

The Committee is invited to discuss the information provided and agree any changes to the work programme that are necessary.

Contact Officers:

Name: Lee Walker
Position: Scrutiny Support Officer
Telephone: 0161 234 3376
Email: l.walker@manchester.gov.uk

Background documents (available for public inspection):

The following documents disclose important facts on which the report is based and have been relied upon in preparing the report. Copies of the background documents are available up to 4 years after the date of the meeting. If you would like a copy please contact one of the contact officers above.

None

1. Monitoring Previous Recommendations

This section of the report lists recommendations made by the Neighbourhoods and Environment Scrutiny Committee. Where applicable, responses to each will indicate whether the recommendation will be implemented, and if it will be, how this will be done.

Date	Item	Recommendation	Response	Contact Officer
9 October 2019	NESC/19/39 Waste, Recycling and Street Cleansing Update	Recommend that the Executive Member for Neighbourhoods reviews the Biffa contract to ensure that it stipulates that Biffa operatives to replace emptied bins in a safe and appropriate manner so as not to cause a hazard or obstruction to other users of the highway and pavement.	Information relating to how this recommendation had been progressed was provided in the report submitted to the October 2020 meeting.	Cllr Akbar
5 February 2020	NESC/20/13 Planning Conditions and Enforcement	The Committee recommend that the Executive Member for Neighbourhoods and the Executive Member for Environment, Planning and Transport work together to ensure that appropriate measures are in place to mitigate the disruption to residents and services delivered in neighbourhoods that result from building construction.	The Committee will be considering a report on Planning Conditions and Enforcement at the meeting of 4 November 2020.	Cllr Akbar and Cllr Stogia
7 October 2020	NESC/20/40 Waste, Recycling and Street Cleansing Update	Recommend that the Executive Member for Neighbourhoods and relevant officers arrange a meeting with local Members so that the concerns of both Members and residents regarding the delivery of waste, recycling and street cleansing services be addressed.	A response to this recommendation has been requested.	Cllr Akbar

7 October 2020	NESC/20/40 Waste, Recycling and Street Cleansing Update	Recommend that the Strategic Lead, Waste, Recycling and Street Cleansing circulate an update to Members of the Committee on the review of communications strategy at the appropriate time.	This recommendation has been accepted.	Heather Coates
7 October 2020	NESC/20/40 Waste, Recycling and Street Cleansing Update	Recommend that the Strategic Lead, Waste, Recycling and Street Cleansing recirculate to Members the maps of all district centres, the schedule for cleansing work and the agreed service standards.	This recommendation has been accepted and this information will be circulated to Members before the November meeting.	Heather Coates
7 October 2020	NESC/20/40 Waste, Recycling and Street Cleansing Update	Recommend that the Strategic Lead, Waste, Recycling and Street Cleansing circulate the latest data relating to recycling rates in apartment blocks to Members.	This recommendation has been accepted and this information will be circulated to Members before the November meeting.	Heather Coates
7 October 2020	NESC/20/41 Highways Maintenance Programme	The Committee requests that information is submitted to the November meeting, detailing all of the social value achieved to date as a result of contracts awarded through the delivery of the Highways Maintenance Programme. The information should provide a breakdown of each scheme with the information provided at ward level, where possible, to identify where those residents who had benefited from this lived in the city.	This recommendation has been accepted and this information is provided as an Item for Information at section 3 of this report.	Steve Robinson
7 October 2020	NESC/20/41 Highways	The Committee recommend that regular meetings are convened by the	A response to this recommendation has been	Cllr Stogia

	Maintenance Programme	Executive Member for Environment, Planning and Transport with all Members of the Committee to discuss Members issues or concerns relating to the delivery of highways projects, and that a briefing note on the outcomes and identified actions arising from these meetings are circulated to Members at an appropriate time.	requested.	
7 October 2020	NESC/20/41 Highways Maintenance Programme	Recommend that the Director of Highways include information and data on the cyclical gully cleansing programme in the Members performance dashboards that was regularly circulated.	This recommendation has been accepted.	Steve Robinson

2. Key Decisions

The Council is required to publish details of key decisions that will be taken at least 28 days before the decision is due to be taken. Details of key decisions that are due to be taken are published on a monthly basis in the Register of Key Decisions.

A key decision, as defined in the Council's Constitution is an executive decision, which is likely:

- To result in the Council incurring expenditure which is, or the making of savings which are, significant having regard to the Council's budget for the service or function to which the decision relates, or
- To be significant in terms of its effects on communities living or working in an area comprising two or more wards in the area of the city.

The Council Constitution defines 'significant' as being expenditure or savings (including the loss of income or capital receipts) in excess of £500k, providing that is not more than 10% of the gross operating expenditure for any budget heading in the in the Council's Revenue Budget Book, and subject to other defined exceptions.

An extract of the most recent Register of Key Decisions, published on **23 October 2020**, containing details of the decisions under the Committee's remit is included overleaf. This is to keep members informed of what decisions are being taken and to agree, whether to include in the work programme of the Committee.

Decisions that were taken before the publication of this report are marked *

There are no Key Decisions currently listed within the remit of this Committee.

3. Item for Information: Scrutiny Covid Sitrep Updates - November 2020 (information correct at 23 October 2020)

Neighbourhoods & Environment Scrutiny (2.00pm) - Wednesday 4 November

Workstream	Issues and challenges experienced	Current position: Has recovery activity closed down (been mainstreamed / returned to BAU), or is continuing? Please give detail.
Residents at risk		
	<p>Shielded Residents and the Food Response (communities)</p>	<ul style="list-style-type: none"> Preparation for any re-instatement of shielding underway. Move to Tier 3 likely to allow those that were previously shielding to pre register for support and access priority super market slots
	<ul style="list-style-type: none"> Numbers are slightly higher than previously c200 people receiving support but are still fluctuating. Small increase in numbers that are self-isolating, working to ensure that there is alignment with self-isolation grant work. Support remains focussed on brokering a community-based food offer Implications of Tier 3 to the food response are being worked through with other internal colleagues ensuring alignment to helpline and wider communications which will be sent to CEV next week from the DoH Meeting with the contact centre to 	

			<p>clarify nature of support esp. now moving into Tier 3 support 22/10, focus will remain on creating a sense of choice and independence where possible.</p> <ul style="list-style-type: none"> • Scenario planning for New Smithfield Market commissioning and potential of shielding being carried out • Further move within New Smithfield expected w/c8 November • New food team is in the process of being identified. Handover will take place over the next month, not all roles have been filled and start dates are staggered so this will pose an added pressure in the short term.
	<p>Domestic Violence & Abuse (communities)</p>	<p>DA providers being able to continue to meet demand and adapt to new restrictions as quickly as possible to ensure safety for their staff and also their service users</p>	<ul style="list-style-type: none"> • Providers have made progress towards ensuring their workplaces are Covid-secure and are places in which they can deliver a limited range of functions in a face to face manner as necessary, while still prioritising other means such as phone, video or other

			<p>online resources.</p> <ul style="list-style-type: none"> Providers, our own in house services, and our DVA team are alive to the potential for Tier 3 measures to have an impact on behaviours and levels of demand as we move into winter. There is the adaptability, based on previous experience during the first lockdown, to be able to revert to modes of delivery utilised at that time, if it becomes necessary.
	<p>Welfare Provision (communities)</p>	<ul style="list-style-type: none"> Uptake of Local Welfare assistance for unpaid carers lower than expected. Crisis support to residents impacted by Covid-19 	<ul style="list-style-type: none"> A total of £39,041 has been paid to 292 carers to date out of an identified 'carers' budget of £100k. This indicates progress continues to be made in providing assistance to carers requiring support. Between 16/3 and 18/10/20 509 applications citing Covid-19 as the reason for requesting assistance have been paid to a value of £34,327 out of an identified 'Covid-19' budget of £100k. A proportion of other cases supported by Welfare Provision

		<ul style="list-style-type: none">• Test and Trace Support Payments	<p>awards will also relate to Covid-19 but the reporting system does not offer a process of identifying these.</p> <ul style="list-style-type: none">• The government Test and Trace Support Payments scheme incorporating a core and a discretionary element paying £500 to eligible applicants launched on 12 October effective from 28 September. An AGMA wide approach has been agreed.• At 20/10/20 the team have received:<ul style="list-style-type: none">○ 848 applications○ Approved and paid 149 'core scheme' cases to a total value of £74,500○ Approved and paid 27 discretionary cases to a total value of £13,500○ Declined 267 cases• Key eligibility indicators for the 'core scheme' are that the resident must:• have been asked to self-isolate by NHS Test and Trace on or after 28 September 2020• be employed or self-employed
--	--	---	---

			<ul style="list-style-type: none"> • be unable to work from home and will lose income as a result of having to stay at home and self-isolate • be receiving a 'passport' benefit (including UC / WTC and others) • The discretionary scheme offers support to residents not receiving one of the 'passport' benefits but who are on a low income and where self-isolation will cause exceptional financial hardship.
	<p>Homelessness (neighbourhoods)</p>	<p>Increase in presentations to pre-Covid levels has continued, presenting additional pressures as access to move-on and temporary accommodation remains limited. Re-start of s21 evictions not being seen as a major factor yet, but this process has only recently re-started and pent-up demand will be seen in the system again soon. Increases in domestic abuse presentations has been sustained.</p> <p>Currently in the process of identifying arrangements for winter provision for people who sleep rough. Numbers have shown a slow but consistent trend of increase. Commitment to not use night shelters wherever possible, but concern as to the availability of self-contained</p>	<p>Working with partners to maximise access to move-on accommodation, including targeted interventions in the private rented sector. This will remain a significant challenge, particularly in light of continuing Covid-19 restrictions.</p> <p>Regular meetings with partners are considering the options for the city for winter. There is a strong view that shelters should not be used though an absolute commitment to this cannot be made, it is a shared aspiration. The scale of provision required</p>

		accommodation, its cost and the availability of adequate staffing and support services, including a food offer.	and the additional cost will be continuing challenges, as will the availability of adequate staffing should a prolonged period of provision be required.
Resilient communities			
	Resilient Communities	<ul style="list-style-type: none"> • Call volumes to the helpline have seen a small increase this week. In part this is due to residents requesting test and trace support payments. Work continues with comms and the national test and trace centre to ensure people get to the right place first time. All calls are directed through to the right team. 	<ul style="list-style-type: none"> • Work continues to understand the capacity within mutual aid groups and the VCS to respond to a second wave.
	Libraries, Galleries and Culture (communities)	<p>Extended opening hours have been postponed as a result of the move to Tier 3. Awaiting clarity and government guidance.</p> <p>Continuing to monitor staffing levels and team bubbles.</p> <p>Impact of Tier 3 local lockdown measures</p>	<p>20 libraries are now open. 2 closed.</p> <p>20% of footfall is accessing digital ie PCs and Internet.</p> <p>Device donation scheme is being progressed. Donations of 400 chromebooks with 6 months of Internet access will begin in mid-October.</p> <p>Re-opening of cultural venues & libraries</p>

		<p>It is expected that additional local restrictions are likely to lead to:</p> <ul style="list-style-type: none"> • Uncertainty for venues with reopening plans – especially for those planning to promote performances in the coming days. • Cinemas, Theatres (adhering to stage 4 protocols), Museums and galleries can technically continue to stay open. although if visitor numbers drop significantly because there is a limited hospitality sector open in the city centre, or because residents are advised not to undertake non essential travel - it may not be worthwhile remaining open. • Those venues that are only or mainly open to provide a hospitality offer such as Halle St Peter or have a significant hospitality offer such as Anthony Burgess Foundation and HOME will be very seriously affected. Elizabeth Gaskell's has been doing well with small weddings but if these are made more difficult that result in a further cut in their 	<p>Update on cultural building reopening dates:</p> <p>Halle St Peter's (wedding venue and restaurant only) - opened in July</p> <p>Night & Day (catering only) - opened 4 July</p> <p>National Football Museum - opened on 23rd July</p> <p>Manchester Craft & Design Centre - open on Fridays and Saturdays in August.</p> <p>Elizabeth Gaskell's House - opened on 12th August</p> <p>Science & Industry Museum- opened on 14th August</p> <p>Manchester Central Library (in addition to the City Library open 4th July) - opened on 20th August - visitor numbers Thurs 20th 0547, Sat 22nd - 478, Mon 24th - 438</p> <p>Manchester Art Gallery - partial reopening on 20th August with reduced hours/days</p> <p>People's History Museum - opened on 1st September</p>
--	--	---	---

		<p>income</p> <ul style="list-style-type: none"> The impact of 'only essential travel' advice will have a negative impact of attendance at venues. <p>Local Restrictions Support Grant</p> <p>Pending further details and guidance for the authority, it is unlikely that any cultural organisations will benefit from these support grants.</p> <p>Local Restrictions Support Grants are only available for businesses that are instructed to close because of the measures not if they <u>can</u> be open but can't make it viable with covid-safe requirements to be open.</p> <p>So if the government makes it still permissible to hold performances but venues can't operate viably without a bar and hospitality offer, they will be excluded from the grant.</p> <p>Manchester Business Sounding Board Indicators</p> <p>Collection and reporting process now</p>	<p><u>The Portico Library</u> - opened on 1st September</p> <p>Centre of Contemporary Chinese Art - opened on 2nd September</p> <p>HOME - opened on 4th September (cinemas, bars and restaurant) & <u>small scale stage productions in main space from 13 October</u></p> <p><u>The International Anthony Burgess Foundation</u> - opened on 8th September</p> <p>The Whitworth - opened on 14th September</p> <p>Manchester Museum - opened on 14th September</p> <p>Contact Theatre - opened for participatory activities on 14 September & covid-safe tours of the newly redeveloped building.</p> <p>Castlefield Gallery - opened on 16th September</p> <p>Z Arts re-opened for participatory activities on 28 September</p> <p>Greater Manchester Museum of Transport (date unknown)</p> <p>North West Theatre Arts Company (date</p>
--	--	--	--

		<p>established to be reported into the weekly Manchester Business Sounding Board for the suite of key indicators for the city centre.</p> <p>Latest weekly visitor numbers (w/e 18 Oct)</p> <ul style="list-style-type: none"> • Central Library: 3243 • Manchester Art Gallery: 874 • HOME: 10386 <p>DCMS announced £1.57 billion investment ‘Culture Recovery Funding (CRF)’ (5/7)</p> <p>Culture Recovery Fund Grants - £500m for England</p> <p>Being delivered by ACE for Cultural organisations (inc profit/ not for profit & charities)</p> <p>Awards under £1m - Round 1 and Round 2 decision have been made awarding £333 million of the up to £500m fund.</p> <p>See table attached for an overview showing where cultural organisations in Manchester</p>	<p>unknown)</p> <p>Hope Mill Theatre - due to open 30 October for live performances</p> <p>Victoria Baths – due to open with Winter Fair 14 November</p> <p>Cultural Venues that are still closed</p> <p>City Centre Venues & attractions</p> <p>Bridgewater Hall</p> <p>Stoller Hall</p> <p>Palace Theatre</p> <p>Opera House</p> <p>Manchester Arena</p> <p>Contact Theatre performances (venue open for participatory activities)</p> <p>Cathedral Visitor Centre</p> <p>Dance House</p> <p>Greater Manchester Police Museum</p>
--	--	---	--

		<p>have received ACE Emergency Funding and ACE delivered CRF grants.</p> <p><u>Awards over £1m and repayable finance</u> - Announcements are pending</p> <p>Capital Kickstart Fund.</p> <p>£120m to support existing arts & heritage capital projects that have experienced delays to build programmes. £55m to be distributed via ACE.</p> <p>Decision on applications now due end November</p>	<p>Holden Gallery (MMU)</p> <p>John Rylands Library (UoM)</p> <p>Manchester Poetry Library (New - due to open x)</p> <p>Band on the Wall (closed for refurbishment)</p> <p>Portico Library</p> <p>Royal Exchange Theatre</p> <p>RNCM (performance venue spaces are closed to the public)</p> <p><u>Neighbourhood based venues & Community led arts spaces</u></p> <p>Z Arts performances (venue open for participatory activities)</p> <p>Gorton Monastery</p> <p>Manchester Jewish Museum (closed for refurbishment)</p> <p>Pankhurst Centre (heritage visitor attraction)</p> <p>The Edge (cafe only open)</p> <p>Northenden Players</p>
--	--	--	--

			<p>Niamos</p> <p>Partisan Collective</p> <p>Victoria Baths</p>
	<p>Parks, Leisure & Events (communities)</p>	<p>1. The no. of reported breaches of guidance/ measures relating to social distancing in community sports settings (non Council buildings) has reduced.</p> <p>2. Cancellations for planned events in the Autumn and Winter.</p> <p>3. Confusion with leisure centre's remaining open under Tier 3 and some disruption to customers as a result of demand for online bookings.</p>	<p>1. Regular comms activity remains in place to reinforce the current guidance and targeted ongoing conversations with leagues and clubs where issues are arising.</p> <p>2. A Briefing Paper with recommendations for further event cancellations or curtailment over the next period was agreed and this has now been communicated to stakeholders and the public. Decisions have also been taken voluntarily by some stadium operators to not permit spectators for recreational sport. A decision on the Lightopia will be taken this week.</p> <p>3. Increased comms went out on October 21 to reinforce the message that leisure centres remain open. Online issues now resolved and a Call Centre is now in place handling 600 calls per week.</p>

		<p>4.Low uptake on the return to swimming lessons.</p>	<p>4.The further messages scheduled to go out last week to reinforce the COVID Safe and Secure measures in place within leisure centres took place and numbers are slowly beginning to rise. Gym memberships have plateaued and current membership levels are at 70-75% of the previous year to date return for October.</p>
	<p>Youth (communities)</p>	<ol style="list-style-type: none"> 1. All youth workers operating inside youth provision are now required to wear face coverings which is creating a barrier 2. Bubble size guidance for over 18's has reduced, which has caused issues for those operating a blended provision 3. Increased numbers of young people congregating outside of youth provision 4. All provision will continue in tier 3 – rating remains at Amber level. 5. Provision for October half term planned with comms strategy in place. 	<ol style="list-style-type: none"> 1. Regular comms activity remains in place to reinforce the current guidance. 2. Youth strategy & Young Manchester held a covid briefing 20/10/2020 for the wider youth and play sector 3. Updated NYA guidance expected this week. 4. We are working with the regional unit and nya to remove the requirement for young people to wear face coverings in youth provision. 5. Detached guidance updated. 6. Regular communications with sector in place, with plans set in case of increased restrictions.

<p>VCSE (Communities)</p>	<p>Ongoing communication and engagement with the VCSE sector, particularly around Covid response and recovery plans.</p> <p>Impact of Covid 19 on the VCSE sector (and those that they serve)</p> <p>VCSE future funding (both MCC and external) - Good range of emergency covid reponse funds made available but concerns around longer term funding of the sector e.g MCC OMVCS grant</p>	<p>No further MCC (Residents & Communities) and VCSE update sessions scheduled at present - being picked up via BAU forums and networks.</p> <p>Macc (VCSE Infrastructure) has produced the first in a series of 'No going back' reports brining together leaders of Manchester based charities to share their experiences of Covid 19 and their thoughts for the future - see link to report below https://manchestercommunitycentral.org/news/%E2%80%9Cinvest-crucial-sector-or-risk-losing-it%E2%80%9D-say-manchester%E2%80%99s-voluntary-sector-leaders. Will be picked up via BAU alongside work of OM Funds, Culture and Young Manchester etc</p> <p>Manchester VCSE funding partnership group set up and currently being supported by the OM Funds Team</p> <p>VCSE Covid Recovery Fund being developed by MCC, MHCC, Young and Manchester and Macc due to launch in Autumn sequenced with the Councils funding decisions for the</p>
-------------------------------	---	---

	<p>Covid Health Equity - communication and engagement with communities of identity</p>	<p>OMVCS grant fund. This is being managed via BAU - OM Funds governance.</p> <p>A Covid Health Equity Group (CHEG) has been established with partners (including the VCSE sector) across the city to improve experiences of and outcomes for communities that suffer disproportionate adverse impacts from COVID-19. This involves reducing the risk of transmission, severe disease and death among groups of people who have been identified as most risk including. An engagement grant is being developed with VCSE partners. This will continue via the new Covid Health Equity workstreams (new normal)</p>
--	--	---

3. Item for Information: Highways Social Value Report November 2020

Report produced by Jade Tonge Strategic Programme Manager Highways Service, Neighbourhoods Directorate

This note is submitted for inclusion in the Overview section of the Committee agenda in response to Decision 1 in the minutes of the October Committee as below:-

1. The Committee requests that information is submitted to the November meeting, detailing all of the social value achieved to date as a result of contracts awarded through the delivery of the Highways Maintenance Programme. The information should provide a breakdown of each scheme with the information provided at ward level, where possible, to identify where those residents who had benefited from this lived in the city.

The attention of the Committee is directed to the Highways social value reports presented to the Ethical Procurement Sub Group – 29 November 2018, 7 June 2018 and December 2017. Much of the successful delivery of the planned maintenance programme has been through frameworks TC40 and TC41 that were procured in 2015/16 before the Council increased the priority and visibility of social value. At that time the social value offer accepted by the Council from contractors consisted of agreeing to the Manchester Minimum Wage, Apprenticeships and no Zero Hour Contracts. Until 2018 suppliers had no real knowledge of what social value the Council wanted and the highways team then engaged with our suppliers to help them help the city and in return they provided more than they were contracted to do although understandably not as much as would be contracted for if tendered now.

It is now normal highways practice for local members to be consulted by highways staff before a tender is drafted to establish what they would like in their area from the project and then for that to be included as a requirement and tenders are scored on how close they get to the requirement or by how much they exceed it. Once a tender offer is accepted the social value offer is a contractual requirement in the same way as building the works. That accepted offer is all that the Council can ask of a contractor. Planned maintenance works represent a challenge to that process as the works happen across the city and so tendered offers need to be more generic. The highways team also maintain a register of asks from members that contractors can be directed to for additional benefits.

Frameworks procured more recently have increased the tender weighting of social value. TC 040 Surfacing of Carriageways and TC 041 Proprietary Treatment to Footways & Carriageways have both been retendered during 2020 and awarded for 4 years. The framework for TC 040 commenced in September and no work has yet been commissioned and therefore no social value offered in

return. The framework for TC 041 also commenced in June but again no work has yet been commissioned and therefore no social value offered in return.

Please note that the Highways Service are still waiting for some data from suppliers. Where this is the case, TBC will be identified in the given cell. Highways will provide an updated version once all information has been received.

Highways Surfacing Programme - Expired Framework – NOTE the framework was tendered prior to the Council including social value requirements as it currently does. The contracted social value offer was for the Manchester Minimum Wage, unspecified apprentices and no zero hours contracts hence most of the list below are extra benefits

Start date: 01/03/2016

End date:01/09/2020

Framework Tenderer Value: £25,000,000 (no guarantee to hit this threshold)

Contractor: Multiple (Dowhigh, Bethell, Hopkins)

Year	Social Value Commitment	Social Value Target	Social Value Delivered	Ward	Contractor:
2018/2019	Employment opportunities	4 jobs	4 jobs	GM 2 jobs 1 job Stretford 1 job Wythenshawe	Dowhigh
2018/2019	Work placement(s) or pre-employment course	1 placement	4 placements	No data from supplier due to GDPR	Dowhigh
2018/2019	Training opportunities for staff and subcontractors	N/A	204 hours	N/A	Dowhigh
2018/2019	Support to a local homeless charity	1 charity	Booth centre 33 second hand mobiles & 16 chargers donated	Cheetham Hill	Dowhigh

2018/2019	In kind donations and contribution to local community causes				
Additional Social Value					
2018/2019	Support to local schools via materials/donations in kind	£300 donations of materials to 4 schools St. Maries RC Primary School St. Wilfred's Primary School Wood Fold Primary School Standish Community High School	Bury Wythenshawe Wigan Wigan		Dowhigh
2019/2020	Donation towards the Read Manchester transition project	£400 donation equating to 100 books purchased for Year 6 across Manchester	Manchester city wide		Dowhigh
2019/2020	Contribution towards CiTB (Construction in the built environment)	£49,622	N/A		Dowhigh
2019/2020	In kind donations and contribution to local community causes	Queens Park –supporting a much need stable foundation /repairs over 200 ton of plainings laid. Supporting much need stable foundation /repairs over 200 ton of plainings laid in Blackley Cleaning the drainage system for a local school in Heath Lane	Harpurhey Blackley Warrington		Dowhigh
2019/2020	Fundraising to support mental health	Setting up and hosting a charity night (supporting Mental Health,	N/A		Dowhigh

		Construction Workers across the UK & Ireland) Raised £1,600 as a result of this event			
2018/2019	Apprentice	1	1	Baguley	Bethell
2018/2019	Employment opportunities	2 jobs for local people	7 jobs for local people	Wythenshawe	Bethell
2018/2019	Support young people into work (under 24s)	4 hours	4 hours	Wythenshawe	Bethell
2018/2019	Support to VCSE's	4 hours	4 hours	Failsworth	Bethell
2018/2019	In kind donations and contribution to local community causes	4 x skips £1000	TBC £1000 to Mustard Tree Charity	TBC Ancoats	Bethell
2018/2019	School engagement sessions	1	1 in conjunction with Manchester Airport	Wythenshawe	Bethell
2019/2020	School engagement sessions	2 events	2 events Mount Carmel RC School GM event at AJ Bell Stadium	Blackley And GM event	Bethell
2019/2020	Work placement(s) or preemployment course	1 placement	1 placement organised with Manchester College	TBC	Bethell

2019/2020	In kind contributions to local causes/charities/ community	£800	£300 worth of donations to 'Reach out to the Community' £500 to the Christies	Chorlton Withington	Bethell
2018/2019	In kind contributions to local causes/charities/ community	TBC	Cornerstone Charity – fixed leaking roofs of 6 safe haven pods	N/A	Hopkins
2018/2019	Recycled waste on contract	100%	100% using own recycled yard	N/A	Hopkins
2019/2020	In kind contributions to local causes/charities/ community	N/A	Donation of road closed signs to support residents events	Chorlton	Hopkins
2019/2020	Volunteering hours to support local community projects	5 hours	14 hours to support yellow brick road project	Openshaw, Fallowfield, Gorton	Hopkins
New framework recently gone live with new suppliers					

Highways Surfacing Project Case Study:

A number of suppliers, MCC Highways employees and neighbourhood officers all came together to plan and organise a community project known as the Yellow Brick Road. Held on the 22nd March 2019, a number of initiatives were carried out to improve anti-social behaviour on the cycle path that runs from Openshaw right through Central Manchester, Gorton and through to Fallowfield; South Manchester.

Hopkins took an active part in contributing towards this community project ensuring the safe removal of boulders across the cycle path followed by resurfacing the area to ensure a smooth transition for cyclists heading into the tunnel. Hopkins also helped with litter picking, fly tipping and cutting back vegetation in order to improve the visual appearance of the area.



Highways Surface Treatment to Carriageways - Expired Framework - – NOTE the framework was tendered prior to the Council including social value requirements as it currently does. The contracted social value offer was for the Manchester Minimum Wage, unspecified apprentices and no zero hours contracts hence most of the list below are extra benefits

Start date: 01/03/2016

End date: 01/09/2020

Framework Tender Value: £6,000,000 (no guarantee to hit this threshold) Contractor: Multiple (JPCS, Kiely Bros)

Year	Social Value Commitment	Social Value Target	Social Value Delivered	Ward	Contractor:
2018/2019	School engagement sessions	1 event	1 event	GM wide event organised by Bridge GM	JPCS
2018/2019	Training event for MCC staff	1 MCC staff member	3 MCC staff members	N/A	Kiely Bros
2018/2019	Employment opportunity for key priority group	1 job	1 job provided for someone with a disability	Newton Heath	Kiely Bros
2018/2019	In kind contributions to local causes/charities/community	£5,000	£20,000 Road Safety programme donations, World Book Day donation, 2 bikes bought & donated, air quality	N/A	Kiely Bros

			monitors		
2018/2019	Recycled waste on contract	95%-100%	100%	N/A	Kiely Bros
2019/2020	In kind contributions to local causes/charities/community	£5,000	Increased £25,000 Community donation – men in sheds LAC award donation	Chorlton	Kiely Bros
2019/2020	Employment opportunity	1 job	1 job provided for someone with a disability	Harpurhey	Kiely Bros
New framework recently gone live with new suppliers					

Highways Surface Treatment Project Case Study:

As part of the surface treatment to carriageways contract, Kiely Bros wanted to give something back to residents of Manchester. Kiely Bros wanted to break down barriers and support a resident who had a disability into employment. Through engagement with MCC Work and Skills team, Kiely Bros interviewed Nicola and offered her a position as an admin assistant. Kiely Bros supported Nicola by altering the job description, encouraging travel outside of peak hours and flexible working arrangements to support her needs. You can find Nicola's story [here](#).

Highways Small Patching Start date: 01/06/2018 End date: 31/03/2020 Contract Value: £3,000,000 Contractor: Multiple (Clearway, UDP, Argyles, Multevo, Nu-Phalt)					
Year	Social Value Commitment	Social Value Target	Social Value Delivered	Ward	Contractor:
2018/2019	Apprenticeship	2 apprentices	6 apprentices	4 Salford 2 Manchester Central	UDP
2018/2019	Employment opportunities	4 jobs	6 jobs	6 Manchester	UDP
2018/2019	Community project	1 project	£5,000 to support Manchester Gymnastics Academy. Car park provided with lining and repaired drainage issue	Salford	UDP
2018/2019	Volunteering hours	10 hours	15 hours supporting the Yellow Brick Road Community Project	Fallowfield	UDP
Additional Social Value					
2018/2019	Employment opportunity for key priority groups		12 jobs for ex-offenders working with organisation called Labour Ready	5 from Salford 7 from Manchester	UDP

2018/2019	Trainee/graduate opportunities		2 positions – 1 trainee accountant and 1 trainee QS	Attending Manchester University	UDP
2018/2019	Support to care leavers		Signed up to the care leavers covenant	N/A	UDP
2018/2019	Volunteering days		New organisation policy, all staff to be given 1 paid day of volunteering a year	N/A	UDP
2019/2020	Support to local community	1 community project	1 community project delivered to resurface and improve the walkway of Alston Road	Gorton	Nu-Phalt
2018/2019	School/college engagement	2 sessions	2 sessions 1 construction skills network session	Wythenshawe	Argyles
2018/2019	Local workplace	1 local site	Invested in a commercial unit for the contract	Failsworth	Argyles
2018/2019	Community projects	2 projects	6 projects	Swinton, Walkden, Salford	Argyles
2018/2019	Volunteering	10 hours	80 hours to create a retaining wall for Islamic Centre	Bury	Argyles
Additional Social Value					

2018/2019	Employment opportunities		2 jobs - 1 kerb layer and 1 labourer	Salford & Swinton	Argyles
2019/2020	In kind contributions to local causes/charities/ community		Woodstreet Mission identified as annual charity for the year for their 150 th year anniversary. Donated books, fundraising, school uniform, table at annual charity ball	Spinningfields	Argyles
2019/2020	Engagement with local charity		Meeting held with Back on Track organisation to identify social value opportunities	Collyhurst	Argyles
2018/2019	In kind contributions to local causes/charities/ community	Donations to be provided	Donations given to Mustard Tree charity	Ancoats	Clearway
2018/2019	Work experience placement	1 placement	1 placement offered to a student at Bedford High School	GM – Leigh	Clearway
2018/2019	Support to local community project	Donations of materials/labour	Compost provided to St. James Primary School to support Early Years outdoor area.	Rusholme	Clearway

New Highways Maintenance Framework is now live. Currently being delivered by Balfour Beatty

Small Patching Framework Case study:

UDP have always been a company that supports employment opportunities for those that need it the most and deserve a second chance in life. After serving nine years in prison and completing a training programme with UDP, Gavin from Ordsall was trusted and given a job to get back on his feet. Worried that his son may take the same route he did, UDP also took on his son, Jake as an apprentice. They now work together in the yard and have an impressive attitude towards their work. Jake also proudly won apprentice of the year at UDP in 2019.

Highways Drainage Improvements and Gully Cleansing Framework

Start date: 01/12/18

End date: 30/04/2022

Framework Tendered Value: £1,820,000

Contractor: Multiple (Rosgal, Balfour Beatty, Sapphire Utility Solution, Bethell)

Year	Social Value Commitment	Social Value Target	Social Value Delivered	Ward	Contractor:
2018/2019	School engagement sessions	3 events	3 events	Openshaw Manchester City Centre GM event	Balfour Beatty
2019/2020	Volunteering hours	5 hours	7 hours NEETs work, support to Alexander Park, Swan Kitchens & Back on Track	Whalley Range	Balfour Beatty
2020/2021	Volunteering hours to support homelessness	10 hours	TBC	TBC	Balfour Beatty
2020/2021	School engagement through Bridge GM	5 hours	TBC	TBC	Balfour Beatty
2019/2020	Apprenticeship	1 apprentice	1 apprentice	Baguley	Bethell
2019/2020	Employment opportunity	1 job	1 trainee quantity	TBC	Bethell

			surveyor		
2019/2020	Volunteering hours	5 hours	TBC One Million Mentors	N/A	Bethell
2019/2020	School engagement sessions	3 events	3 events	Harpurhey Blackley	Bethell
2019/2020	Work placement(s) or preemployment course	1 placement	1 QS college placement	Openshaw	Bethell
2020/2021	Apprenticeships	6 from GM area	6 apprenticeships 1 x Trainee Quantity Surveyor 1 x Trainee Business Administrator 4x Apprentice Groundwork Operatives	TBC	Bethell
2018/2019	Local workforce and local spend	80%	70.50%	TBC	Rosgal
2018/2019	In kind contributions to local causes/charities/community	£10,000	£26,400 – Cornerstone Charity, Big Sleep Out and purchase of safehaven pod Manchester 10k fundraiser Charity event at Northenden Golf Club	Salford Northenden Manchester Central	Rosgal

2018/2019	Community projects	£50,000	£31,285 Surfacing and drainage at New Islington School Kerb and footway works for 95 year old resident to support accessibility issues	New Islington Wythenshawe	Rosgal
2018/2019	Materials and in kind contributions	£1,000	£1089.00 to Irish Residents Association	Chorlton	Rosgal
2018/2019	Waste diverted to landfill	93%	93.6%	N/A	Rosgal
2018/2019	Financial donation to local community causes	TBC	Supported local food bank 'The Trussell Trust Food Bank' Cornerstone Charity volunteering days to support the homeless	Burnage Salford	Rosgal
Additional Social Value					
2019/2020	In kind donations	N/A	Donation of barriers to support social distancing measures in schools and for local events	Levenshulme Cheetham Hill	Rosgal

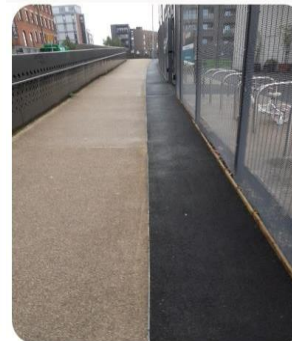
2019/2020	Support to community projects (time, cost, labour & materials)	N/A	Circa £12k - Parsonage Pocket Park	Withington	Rosgal
2019/2020	Volunteering hours	8 weeks daily equating to £13,000	Support to Bread and Butter Thing during Covid19 pandemic to deliver food parcels.	City Wide Withington	Rosgal
2019/2020	Volunteering hours	Van, driver and wages of employee	Rosgal provided a vehicle and driver. Also transported the vulnerable to Christie Hospital to attend vital appointments and treatment)		

Drainage Improvement Framework Case Study:

Rosgal have provided social value to the local community in several ways.

A number of Rosgal's employees took part in a fundraising sleep out with local charity Cornerstone, raising more than £4000, to which the company added a further £6,000 to adopt a homeless 'pod' for a year. They also undertook some resurfacing work at New Islington School, as part of their Social Value commitments to the Drainage Improvement Framework.

They also supported a 95 year old resident living in the Moss Nook area of the city. She helped to communicate concerns which she and her neighbours had about crossing Shadowmoss Road to reach local public transport. She did this daily with a trolley to support her disabled son, and as a result of her action, Rosgal used social value to lower the kerbs near to the bus stop opposite her driveway, and liaised with Highways to try to arrange some speed watch initiatives in the area.



Gully Cleansing Framework Case Study:

Sapphire Utility Solutions decided to support Read Manchester to promote the message of taking 10 minutes a day to read. This is proven to improve mental and support well-being. Sapphire Utility Solution used their vehicles to brand the Manchester logo and material to spread this message far and wide as they were across the wards of Manchester.



health
Read
working

Highway Maintenance Contract – Patching defect repairs (Potholes)

Start date: 03/12/2019

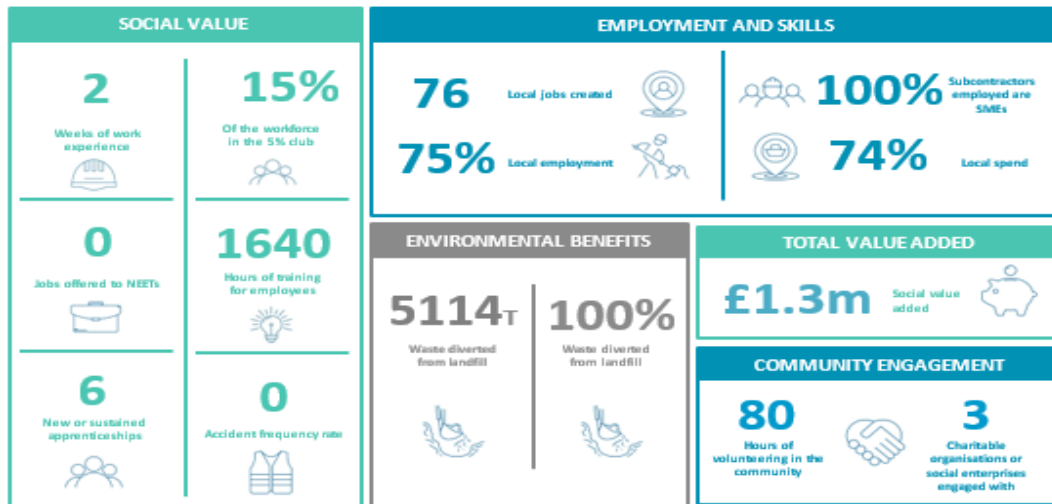
End date: 02/12/2021 – With an option to extend by a further two years

Contract Value: £5,000,000

Contractor: Balfour Beatty Living Places



MANCHESTER CITY COUNCIL AND BALFOUR BEATTY August 2020- PATCHING SOCIAL VALUE REPORT



Date issued: 03/05/2020

Promise	RAG	Comments
Environmental Sustainability		
Balfour Beatty's group policy commitment is to reduce site activities by 25% by 2025 to look at areas that utilize the revolution of technological advancements to work towards smart construction by maximizing off site activities which will result in lower environmental impact to support MCC in its objective of being carbon neutral by 2038. This will be done		

	by:		
1	Ensuring that all vehicles will comply with Euro 6 emission standards. This standard aims to reduce levels of harmful car and van exhaust emissions both in petrol and diesel engines, in line with Manchester City Council's mission to be a zero carbon city by 2050		All Balfour Beatty vehicles used for the MCC Contract comply with the Euro 6 emission standards.
2	Trialling a JCB 3CX Compact Highway Master. The JCB 3CX model has a smart on board dust suppression system which engages automatically as the works are being carried out, capturing all harmful by-products of the works. This approach is 200% more time efficient than the conventional method of repairing the carriageways		The JCB 3CX Compact Highways Master has been signed off with our plant and fleet team and has been delivered.
3	Local Sourcing. Materials, plant, labour and sundries will be from the local area to negate the need for out of area / long haul deliveries.		<ul style="list-style-type: none"> •All of our materials are sourced locally where we can. We obtain tarmac from local tarmac plants in Ashbury, Salford, Warrington and Bredbury. •We source all our plant from our local A-Plant depot. •81% of our workforce resides within the Greater Manchester area, meaning that 82no local jobs have been created thus far. This will continue to increase as we restart our recruitment, Covid-19 depending.
4	Balfour Beatty aims to use hybrid or electric vehicles wherever possible. All senior managers have hybrid cars and the group have recently been using electric vans on the Rochdale Council Highways contract,		We are looking to trial electric vans on the MCC Contract in the near future

	this will be looked at to trial on the MCC Contract		
5	Introduce the Masternaut system to the contract to plan works efficiently and minimise the amount of time each vehicle is in transit. The aim of this system is to reduce CO2 emissions and environmental impact across Manchester		At present, all Balfour Beatty vehicles have the Masternaut system built in and movements are regularly checked by supervisors. As Balfour Beatty gangs are predominantly working on Emergency Call Out works and Patching, the Masternaut route planning system is not yet being utilised due to the reactivity of the work. We plan to fully integrate this once the backlog works are completed and we predominantly run on a planned works basis
6	Health, Safety, Environment and Sustainability (HSES) Plan to be set up during mobilisation and agreed with MCC		First draft complete, under review
7	100% of waste will be diverted from landfill		5,114 Tonnes
8	Water consumption reduction targets		
9	We will adhere to a set of carbon emissions reduction targets, in line with Manchester City Council's mission to be a zero carbon city by 2050		3 P's carbon commitments are developed with MCC and are being tracked each month.
	Employment		
1	In the Greater Manchester area, Balfour Beatty Living Places currently employ over 900 people, including fifty graduates and apprentices. As part of the MCC Highways Defect contract BBLP will be looking to recruit up to 30 directly employed staff from within Greater Manchester and up to 9 of these will be apprentices. The apprentices will be sponsored to attend local colleges		Currently, we directly employ 6no employees from the Manchester area. Due to the Covid-19 outbreak, we had to freeze our recruitment process. This began again in early August and we are actively recruiting 6no apprentices, 35% appointed to date, remaining planned for early October 20.Emphasis is always on Manchester employment.

	within Manchester to study highway maintenance engineering and management			
2	Balfour Beatty are committed to exceeding the Manchester Living wage for all their employees		All Balfour Beatty employees working on the MCC contract receive a wage that exceeds the Manchester Living wage. Paying a minimum of £10.50 per hour.	
3	We will work with the Manchester project team to identify local schools, colleges and charities to identify and plan opportunities (NEETS, ethnic minorities, disabled etc.).The BB group are executive sponsors of the Hi Futures programme and are committed that their investment will result in possible avenues into work for the homeless		We are currently working with Re-vision and Project Recce. One member of Staff recruited to date.	
4	Our close ties to Universities, colleges and schools ensures that we promote skills development to encourage the next generation of engineers, in line with our CEO's 5% club initiative. We will regularly look at working with educational facilities on this contract to promote the STEM industry		We have conducted two work safari days with a local school from the Manchester area to promote roles within STEM industries. The days were designed to highlight to year 9 and 10 students how English and Maths are used daily within the construction industry. The students used measuring wheels and tape measures to measure a 'site' and calculate its area. They were then given a list of materials that they could choose to use to complete the works based on price and environmental impact. After choosing their desired material the teams calculated a price for completing the works and wrote a bid to present to the rest of the group to illustrate their social value promises. The work safari days were well received and enjoyed by all. We plan to replicate	

			the days with more local schools in the next academic year – Covid-19 pending	
5	We will target the young and unemployed as well as NEETS (Not in Employment, Education, or Training), when recruiting, ensuring we have a minimum of 4 No local employees		On-going as part of recruitment through RE:vision	
6	We will ensure we remain within the "5% Club" (5% of our employees will be in earn and learn positions, including apprentices, sponsored students and graduates on formalised training schemes)		On-going as part of recruitment	
7	We will provide all required training to highway maintenance defect operatives		Full training is ongoing for both new and current staff as needed. Some training has been restricted due to COVID-19. However essential H&S training being carried out safely.	
8	100% of our staff will have Career Progression Plans and a Training Matrix agreed yearly		Ongoing	
9	40% of our turnover will be with SME's		Currently exceeding this target	
10	We will conduct a number of business incubation activities for new businesses in their start-up phase		Not started	
	Volunteering			
	Each OF BBLP's members of staff working in Manchester will receive 2 "Community Days" for paid time off to work to support local Manchester Community/ Charity organisations. Previous schemes which BBLP have supported include:			
1	Read Manchester where we will look at holding book donation drives and helping in libraries to encourage a greater reading culture		We aim to link the magazine donations from Immediate Media to the Read Manchester campaign	

2	Homeless charities such as Shelter and Barnabus		By working with members of MCC Social Value team such as Jade Tongue, we plan to identify specific homeless charities to donate socks, bedding and quilt covers to	
3	Go Green; looking at working with environmental charities to improve shared spaces, parks and playgrounds. Operatives can provide tools, labour and sundries to help improve the local area		Not started yet	
Supply Chain				
1	Invest locally in businesses for the supply of materials, plant and sub-contractors at a minimum of 35% from the contract value		All of the tarmac used on the MCC Contract is sourced locally from Tarmac plants in Ashbury, Salford, Warrington and Bredbury. All plant is obtained from our local A-Plant depot, and 83% of subcontractors employed are local SME's	
2	Launch events; BBLP are looking to hold a launch event in Manchester for their recently successful Winter Maintenance contract with MCC. BBLP would like to either incorporate the Highway Repair launch with this event or hold a separate day		A successful launch event was held for the introduction of the new gritting fleet as part of the Winter Maintenance contract. We hope to hold a similar event in the future once the Covid-19 pandemic has passed for our JCB 3CX Compact Highways Master	
3	We will support the local supply chain through the Supply Chain Sustainability School (Gold Funding Member) and Sustainable Procurement initiative		On offer to all supply chain as part of working with BBLP	
Our Commitment to Manchester				
1	We will be committed to carrying out similar community projects throughout Manchester similar to those that were detailed within		As mentioned previously, we plan to replicate our work safari days with more local schools throughout the Manchester area to highlight how important	

	our tender submission, these will be agreed and implemented with the Manchester project team		English and Maths are throughout the construction industry, with the aim to encourage young talent into the STEM sectors	
2	Our SMT volunteering as school ambassadors in local schools to aid with mock interviews and career talks and arrange career days		Ongoing	
3	Creating and monitoring a monthly report in co-ordination with MCC		Ongoing	
4	Operatives whilst in the Manchester area to drop and collect donations for homeless charities		Not started due to COVID-19. Central donations given	
5	Dress down Fridays where staff collections are saved over the course of year and are donated to the MCC Client for their preferred Social Value choosing		Ongoing	Considering dress up Fridays now!
6	We will provide regular updates on LTI & RIDDOR rates		0 Incidents	
7	In order to drive best practice, Sam Sagers will chair an Involved Progress Meeting with MCC representatives		Next meeting TBC Late September 20	

Social Value - Supply Chain

Our Partners



Social Value- Magazine donation

- Balfour Beatty (BB) procured 1600 magazines from a magazines publishing house as well as 20 pallets of thermal socks and bedding which we distributed to charities across Manchester in partnership with MCC. To help the vulnerable during the COVID-19 pandemic

Social Value – Employment

Hiring local people and creating local opportunities is one of our key social value targets. Since the beginning of the contract we have;

- Focused on hiring NEETs and apprentices and engaged with several charities
- Hired 2 ex armed forces staff members
- 6 apprentices, which mean 15% of the workforce are part of the 5% clubs
- Provided 1640hr of training since the beginning of the contract
- Created 76 local jobs
- Engaged with two school about work experience placements and work safari days for School leavers



**Neighbourhoods and Environment Scrutiny Committee
Work Programme – November 2020**

Wednesday 4 November 2020, 2:00pm (Report deadline Friday 23 October 2020)				
Item	Purpose	Lead Executive Member	Lead Officer	Comments
Update on the 2021/22 budget position and options to close the budget gap	Precise details to be confirmed.	Cllr Akbar Cllr Stogia Cllr Rahman Cllr Richards	Fiona Worrall	
Active Travel	<p>To receive a report on the activities undertaken to promote active travel and connectivity across the city.</p> <p>This report to include information on:-</p> <ul style="list-style-type: none"> • Activities undertaken to promote active travel across the city, highlighting what is happening in each district; • Work with schools and neighbourhoods; • Physical infrastructure to support active travel and future plans; • How does active travel link into the climate change emergency to reduce carbon and improve clean air; • How is active travel being promoted in ward plans; • An update on funding from government for active 	Cllr Stogia Cllr Akbar	Shefali Kapoor Steve Robinson Amanda Corcoran	

	<p>travel and what other funding avenues are being accessed;</p> <ul style="list-style-type: none"> • Options for further pop up cycle lanes and other measures in the city; and • How are we measuring the objectives of Active travel. 			
Planning Conditions and Enforcement	<p>To receive a report which provides the Committee with information on the following areas of activity:</p> <ul style="list-style-type: none"> • Known active construction sites across the authority; • The city's start and end times for construction works to be undertaken and the rationale for those times; • How many neighbouring local authorities and other core cities have the same permitted construction times as Manchester; and • Information on the monitoring of construction sites • and the approach taken to enforcement, including examples of types of breaches identified and how these were addressed. 	Cllr Stogia	Julie Roscoe	
Overview Report	<p>This is a monthly report, which includes the recommendations monitor, relevant key decisions, the Committee's work programme and any items for information.</p>		Lee Walker	

Wednesday 2 December 2020, 2 pm (Report deadline Friday 20 November 2020)

Item	Purpose	Lead Executive Member	Lead Officer	Comments
Annual Compliance and Enforcement Service Performance Report	<p>To provide members with an update on demand for and performance of the Compliance and Enforcement service during the previous 12 months.</p> <p>Included in this report will be information on:</p> <ul style="list-style-type: none">• A breakdown by ward of the number of flytipping cases by month with comparisons against previous year's figures;• Information on where the additional investment to tackle flytipping had been spent; and• Data by ward on the number and nature of calls to the Out of Hours service during the COVID lockdown period.	Cllr Akbar	Fiona Sharkey	
Homelessness	<p>To receive a report on the work that is taking place to tackle homelessness and rough sleeping in the city.</p> <p>This will include:</p> <ul style="list-style-type: none">• Data on the number of homeless presentations since the last report to Committee, including a breakdown by families, single people and how many present from outside of Manchester;• Section 21 suspension – What is the anticipated	Cllr Rahman	Mike Wright	

	<p>impact over the next 6 months;</p> <ul style="list-style-type: none"> • Information on the number and location of facilities to support and accommodate homeless people (both provided by Manchester City Council and independent providers) and how long the support/ accommodation is provided for; • A list of voluntary sector providers supporting the homeless with accommodation and other services; • An update on the A Bed Every Night service and the preparations to support homeless people through the winter period; • Information on the activity and progress to accommodate and support homeless people who had been housed in hotels and other temporary accommodation during the COVID crisis; • Information on inspections undertaken of temporary accommodation to ensure they are safe for residents occupying them; and • Data on the length of time people stay in temporary accommodation. 			
Overview Report			Lee Walker	

Wednesday 13 January 2021, 2 pm (Report deadline Thursday 31 December 2020)				
Item	Purpose	Lead Executive Member	Lead Officer	Comments
Green and Blue Infrastructure Strategy	To receive an update report on the Green and Blue Infrastructure Strategy.	Cllr Stogia	Pat Bartoli Julie Roscoe	

	This report will also provide an update on the implementation of the Manchester Tree Strategy.			
Budget-related item	Precise details to be confirmed.	Cllr Akbar Cllr Stogia Cllr Rahman Cllr Richards	Fiona Worrall	To be confirmed
Overview Report	This is a monthly report, which includes the recommendations monitor, relevant key decisions, the Committee's work programme and any items for information.		Lee Walker	

Items to be scheduled				
Item	Purpose	Lead Executive Member	Lead Officer	Comments
Behaviour Change and Waste Task and Finish Group – Update report	To receive a report that provides the Committee with an update on the actions taken to progress the recommendations made by the Behaviour Change and Waste Task and Finish Group that were endorsed by the Committee at their meeting of 9 October 2019.	Cllr Akbar	Fiona Worrall	