

Manchester City Council Report for Information

Report to: Children and Young People Scrutiny Committee – 9
October 2024

Subject: Making Manchester Fairer Children’s Kickstarter Scheme

Report of: Director of Education

Summary

This report provides a progress update the implementation and delivery of the Making Manchester Fairer Kickstarter Scheme - Improving Health Equity for Children and Young People – Children's element.

Recommendations

- To note and celebrate the impact identified in the interim evaluation of year 1.
 - To consider phase 2 of the Kickstarter for September 2024.
-

Wards Affected:
All

Environmental Impact Assessment - the impact of the issues addressed in this report on achieving the zero-carbon target for the city	
Equality, Diversity and Inclusion - the impact of the issues addressed in this report in meeting our Public Sector Equality Duty and broader equality commitments	

Manchester Strategy Outcomes	Summary of How this report aligns to the OMS
A thriving and sustainable city: supporting a diverse and distinctive economy that creates jobs and opportunities.	Effective Children and Education Services are critical to ensuring our children are afforded opportunities and supported to connect and contribute to the city’s sustainability and growth.
A highly skilled city: world class and home-grown talent sustaining the city’s economic success.	Ensuring children and young people are supported and afforded the opportunity to access and achieve in the city; empowered and supported by the delivery of a strong and cohesive system that works for all children.

A progressive and equitable city: making a positive contribution by unlocking the potential of our communities.	Improving education and social care services that are connected to the wider partnership build the resilience of children and families needed to achieve their potential and be integrated into their communities.
A liveable and low carbon city: a destination of choice to live, visit, work.	Improving outcomes for the children and families across the city, helps build and develop whole communities and increases the liability of the city
A connected city: world class infrastructure and connectivity to drive growth.	Successful services support successful families who can deliver continuing growth in the city

Contact Officers:

Name: Sean McKendrick
Position: Acting Strategic Director of Children and Education Directorate
E-mail: Sean.Mckendrick@manchester.gov.uk

Name: Amanda Corcoran
Position: Director of Education
E-mail: Amanda.corcoran@manchester.gov.uk

Name: Andrea Daubney
Position: Assistant Director of Education
E-mail: Andrea.Daubney@manchester.gov.uk

Name: Justin Warne
Position: Project manager
 Making Manchester Fairer Children's & Education Kickstarter
E-mail: Justin.Warne@manchester.gov.uk

Supporting Documents (available for public inspection):

The following documents have been used to support the content of the report.

Building Back Fairer – Tackling Health Inequalities in Manchester – Health and Wellbeing Board, 6 July 2022

Making Manchester Fairer, Tackling Health Inequalities in Manchester 2022-2027 – Health Scrutiny Committee, 12 October 2022

Making Manchester Fairer - The Anti-Poverty Strategy 2023-2028 – Economy Scrutiny Committee, 18 January 2023

Making Manchester Fairer - – Tackling Health Inequalities in Manchester – Health and Wellbeing Board, 25 January 2023

Making Manchester Fairer - – Tackling Health Inequalities in Manchester – Health and Wellbeing Board, 7 June 2023

Making Manchester Fairer - – Tackling Health Inequalities in Manchester – Health and Wellbeing Board, 20 September 2023

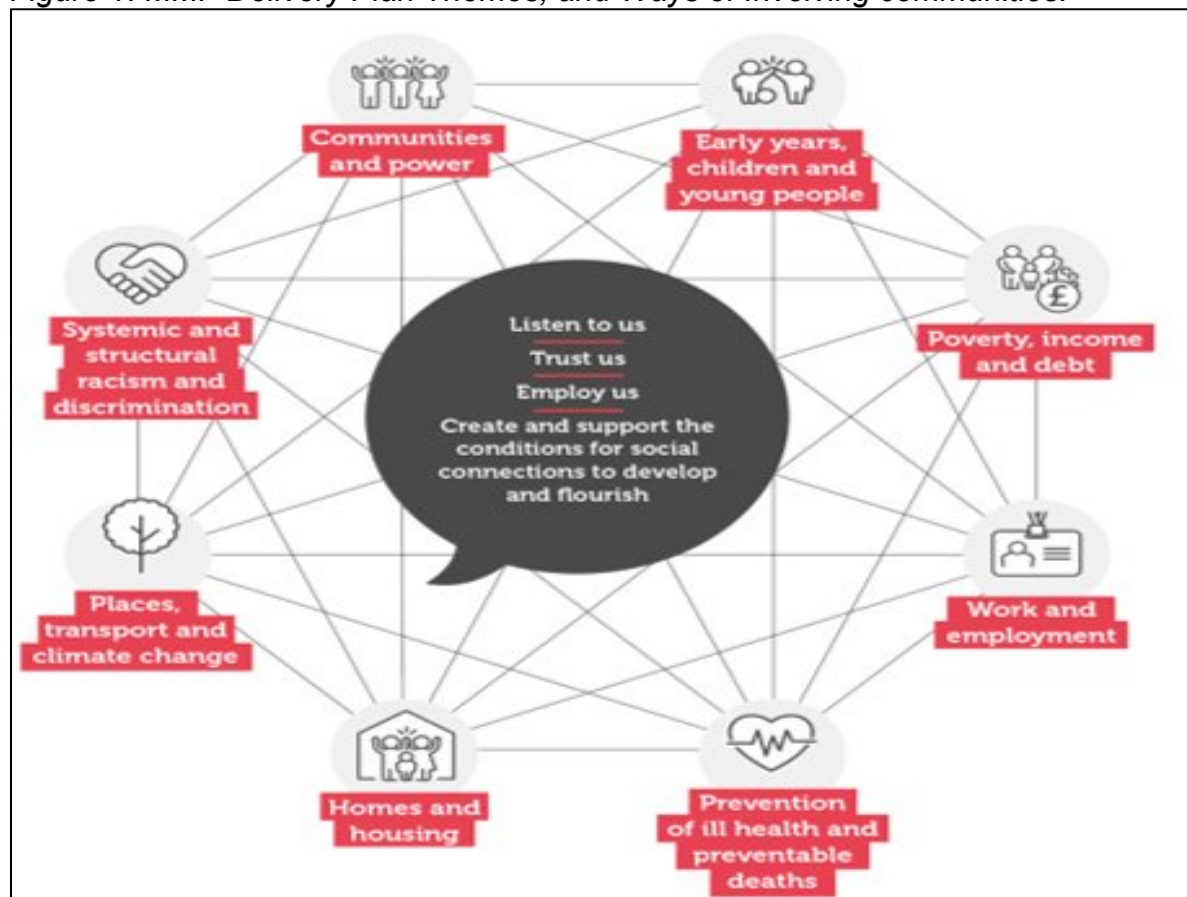
Making Manchester Fairer - – Tackling Health Inequalities in Manchester – Health and Wellbeing Board, 1 November 2023

Making Manchester Fairer - – Tackling Health Inequalities in Manchester – Health and Wellbeing Board, 25 January 2024

1. Introduction

- 1.1 Making Manchester Fairer (MMF) is Manchester City Council's five-year action plan to address health inequalities in the city focusing on the social determinants of health.
- 1.2 The delivery of Making Manchester Fairer can be summarised by its eight themes, four ways of involving communities and six principles that underpin the way the programme will be delivered.

Figure 1: MMF Delivery Plan Themes, and Ways of Involving communities.



*Based on insight from community group engagement

- 1.3 The six principles are
 - Proportionate universalism and focus on equity
 - Respond to and learn from impact of COVID-19
 - Tailor to reflect the needs of Manchester
 - Collaboration, creativity and whole system approach
 - Monitor and evaluate to ensure we are Making Manchester fairer – narrowing gaps within Manchester as well as regional and national averages
 - Take a life course approach with action on health inequalities starting before birth and right through to focus on ageing and specific needs of older people

1.4 The plan is broad and ambitious plan that will take time to get underway and deliver well. In recognition of that, a number of Kickstarter schemes were identified to ‘kickstart’ delivery of the plan with a focus on improving health equity, exemplifying the MMF principles and building momentum for the plan’s delivery whilst the detail of the broader approach takes shape.

1.5 A report was provided to the Health and Wellbeing Board in January 2023 on:
 (i) Improving Health Equity for Children and Young People - children’s element
 (ii) Early Help for Adults Experiencing Multiple and Complex Disadvantage.

This report will provide a progress update on the Improving Health Equity for Children and Young People – children’s element

2. Overview of Children’s Kickstarter model

2.1 The EYFS attainment gap between Manchester and Greater Manchester (GM) and the wider North-West (NW) was between 1-3% between 2017 and 2019. Post-COVID Manchester experienced the largest decrease, with the attainment gap increasing between GM to 8% and NW to 9%

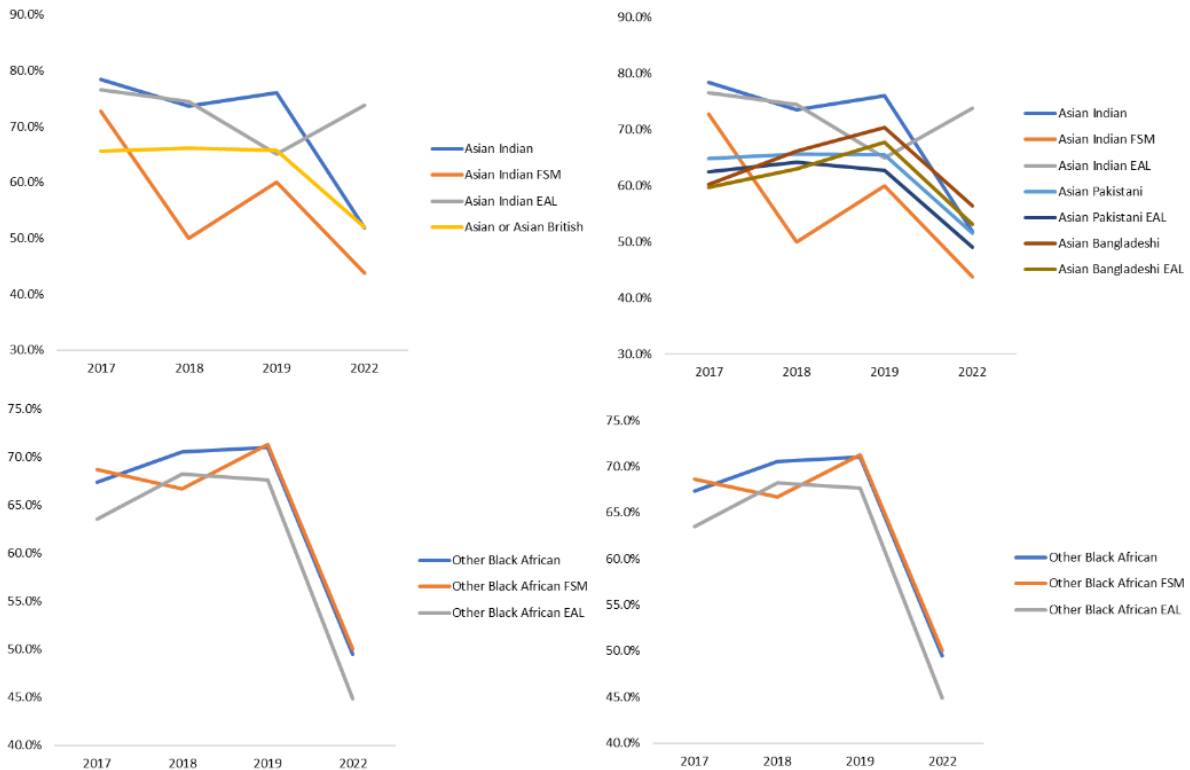


2.2 EYFS (Y1) attainment in Manchester remains lower than GM, NW and England, and experienced a larger reduction between 2019 and 2022:

- Pupils eligible for FSM had the lowest levels of attainment (47%) and experienced the largest decrease between 2019 and 2022 (13%)
- Asian Indian children saw largest decrease between 2019 & 2022 of -24%.

In this cohort children eligible for FSM performed the worst

- In Asian Pakistani and Asian Bangladeshi groups EAL had the biggest influence on performance
- Children with EAL saw largest drop - also seen in Other Black African groups



This data presented a number of concerns:

- Manchester children (now in Year 3), would spend longer in school trying to catch up compared with their peers elsewhere. This was likely to impact on their overall educational outcomes, access to opportunities and general wellbeing in the future
- Children in the early years would be significantly behind their peers. This was due partly to a lack of access to early education and services during and just after the pandemic
- The number of children presenting in EYFS with significantly delayed development led to an increase in requests to the Local Authority for Education Health and Care plans (EHCPs) as well as referrals to specialist services such as speech and language therapy and CAMHs
- Some children with developmental delay as a result of the pandemic were being incorrectly identified as having a special educational need – this has a long-term impact on the child and also impacts on increased demand for services

2.3 In order to address these issues, a three-tiered approach (intensive, targeted and universal) to holistic support for children and families, targeted at schools and areas with poorer outcomes was designed.

Intensive support:

- 10 schools (GLD under 34%)
- Multi-agency taskforce
- Implementation from April 2023

Targeted support:

- 42 schools (GLD under 50%)
- Direct advice and support service
- Online launch beginning of July and implementation September 2023

Universal support:

- Access to drop-ins, training, advice and events provided by Speech and Language Therapy and Educational Psychology
- Early Years outreach workers
- Summer transition read

2.4 The Children's Kickstarter links closely to the principles of Making Manchester Fairer:

- **Proportionate universalism and focus on equity**
 - Via the Kickstarter the schools and therefore children and families with the most need received additionality.
- **Respond to and learn from impact of COVID-19**
 - The Kickstarter directly responded to the presenting need in Manchester schools as a result of the pandemic.
- **Tailor to reflect the needs of Manchester**
 - The scheme was designed to reflect the needs of our communities and our children within them.
- **Collaboration, creativity and whole system approach**
 - The scheme brought together schools, professionals and other services within MCC and beyond to collaborate in the best interests of our children and communities.
- **Monitor and evaluate to ensure we are Making Manchester fairer – narrowing gaps within Manchester as well as regional and national averages**
 - As seen in the PowerPoint Appendices, interim evaluation of the scheme shows it has been effective in narrowing gaps within Manchester. A full evaluation will be available in autumn 2024.
- **Take a life course approach with action on health inequalities starting before birth and right through to focus on ageing and specific needs of older people**
 - The scheme takes action on health inequalities on entry to school with the aim of de-escalating need.

2.5 Children's Kickstarter scheme proposal was formally approved by the MMF Board in July of 2023, however due to education timetables implementation of small but essential elements of the scheme began in April 2023. Leadership of the Kickstarter sits within the Children's & Education department.

3. Summary and Recommendations

- 3.1 Early evaluation indicates that the Children's Kickstarter has had a substantial impact in response to the impact of COVID-19 on children 7 years and under.
- 3.2 As a result of this, a second year of the project has been jointly funded by Public Health and Children's & Education.
- 3.3 The next phase of the project will extend intervention to include Private, Voluntary & Independent (PVI) settings in addition to primary schools. Support to be offered to 44 Primary schools and 40 PVI settings.
- 3.4 In 2024/25 there will be an enhanced focus on of a focus on Speech Language and Communication Needs and Social, Emotional Mental Health needs.
- 3.5 Schools and settings have been identified using 'Towards a Balanced System' analysis prediction of SLCN need in the city and deprivation indicators.
- 3.6 The second phase of the project will also respond to needs identified in Year 1 including joint working with the Ethnic Health Forum and Resolve Poverty.
- 3.7 Learning from this work will feed into ongoing work around the commissioning of Speech and Language Therapy in Manchester.

4. Appendices

PowerPoint - MMF Children's Kickstarter Report Slides.