

Manchester City Council
Report for Information

Report to: Manchester Health and Wellbeing Board – 18 September 2024

Subject: Making Manchester Fairer: Update on Children’s Kickstarter Scheme

Report of: Director of Public Health, Manchester City Council

Summary

This report provides a progress update on the delivery of the Making Manchester Fairer Kickstarter Scheme - Improving Health Equity for Children and Young People – Children’s element.

Recommendations

The Board is asked to:

- (1) Note and celebrate the impact identified in the interim evaluation of year 1.
 - (2) Consider phase 2 of the Kickstarter for September 2024.
-

Wards Affected: All

Environmental Impact Assessment -the impact of the issues addressed in this report on achieving the zero-carbon target for the city	The Making Manchester Fairer Action Plans Theme 6: Places, Transport and Climate Change contributes to improving our surroundings, the environment where we live, transport and tackling climate and ultimately the cities zero carbon target.
Equality, Diversity and Inclusion - the impact of the issues addressed in this report in meeting our Public Sector Equality Duty and broader equality commitments	All Kickstarter models featured in the report have completed an Equality Impact Assessment (EqIA) with the focus on improving health equity for the target population groups.

Manchester Strategy outcomes	Summary of how this report aligns to the OMS/Contribution to the Strategy
A thriving and sustainable city: supporting a diverse and distinctive economy that creates jobs and opportunities	<p>There is a recognition that Covid-19 has had a disproportionate impact on certain communities in our city. In delivering Making Manchester Fairer we will address the health inequalities that have been exacerbated by the Pandemic and the Cost of Living Crisis.</p> <p>The plan, sets out how we will build on the strengths of Manchester as a city and the amount of work that is already taking place to improve lives for residents, reflecting the OMS outcomes:</p> <ul style="list-style-type: none"> • A Progressive and Equitable City: We will strive to create a truly equal and inclusive city, where everyone can thrive at all stages of their life, and quickly and easily reach support to get back on track when needed. • A highly skilled city: world class and home-grown talent sustaining the city's economic success • A liveable and low carbon city: a destination of choice to live, visit, work
A highly skilled city: world class and home-grown talent sustaining the city's economic success	
A progressive and equitable city: making a positive contribution by unlocking the potential of our communities	
A liveable and low carbon city: a destination of choice to live, visit, work	
A connected city: world class infrastructure and connectivity to drive growth	

Contact Officers:

Name: Dr Cordelle Ofori
Position: Director of Public Health
E-mail: cordelle.ofori@manchester.gov.uk

Name: Andrea Daubney
Position: Assistant Director of Education
E-mail: Andrea.Daubney@manchester.gov.uk

Name: Justin Warne
Position: Project Manager - Making Manchester Fairer Children's & Education
Kickstarter
E-mail: Justin.Warne@manchester.gov.uk

Background documents (available for public inspection):

Building Back Fairer – Tackling Health Inequalities in Manchester
Health and Wellbeing Board, 6 July 2022

Making Manchester Fairer - Tackling Health Inequalities in Manchester 2022-2027
Health Scrutiny Committee, 12 October 2022

Making Manchester Fairer - The Anti-Poverty Strategy 2023-2028
Economy Scrutiny Committee, 18 January 2023

Making Manchester Fairer - Tackling Health Inequalities in Manchester
Health and Wellbeing Board, 25 January 2023

Making Manchester Fairer - Tackling Health Inequalities in Manchester
Health and Wellbeing Board, 7 June 2023

Making Manchester Fairer - Tackling Health Inequalities in Manchester
Health and Wellbeing Board, 20 September 2023

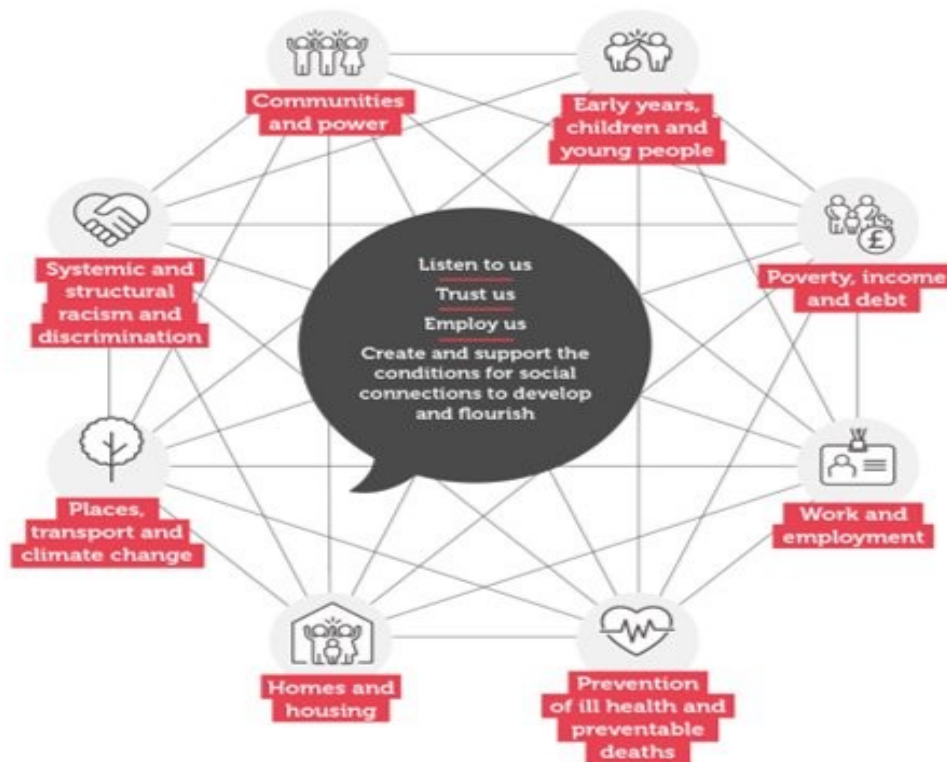
Making Manchester Fairer - Tackling Health Inequalities in Manchester
Health and Wellbeing Board, 1 November 2023

Making Manchester Fairer - Tackling Health Inequalities in Manchester
Health and Wellbeing Board, 25 January 2024

1.0 Introduction

- 1.1 Making Manchester Fairer (MMF) is Manchester City Council's five-year action plan to address health inequalities in the city, focusing on the social determinants of health.
- 1.2 The delivery of Making Manchester Fairer can be summarised by its eight themes, four ways of involving communities and six principles that underpin the way the programme will be delivered.

Figure 1: MMF Delivery Plan Themes, and Ways of Involving communities.



*Based on insight from community group engagement

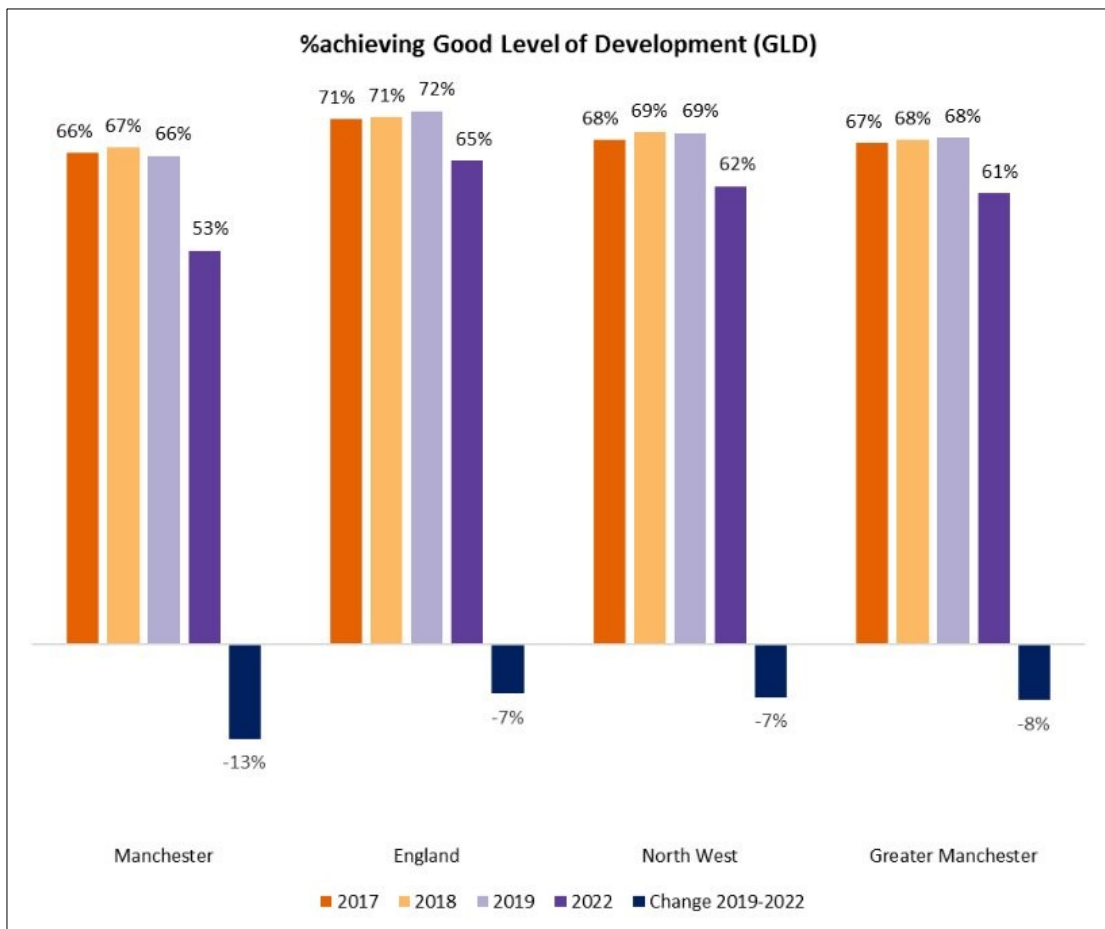
- 1.3 The six principles are
 - Proportionate universalism and focus on equity
 - Respond to and learn from impact of COVID-19
 - Tailor to reflect the needs of Manchester
 - Collaboration, creativity and whole system approach
 - Monitor and evaluate to ensure we are Making Manchester fairer – narrowing gaps within Manchester as well as regional and national averages
 - Take a life course approach with action on health inequalities starting before birth and right through to focus on ageing and specific needs of older people
- 1.4 The plan is a broad and ambitious plan that will take time to get underway and deliver well. In recognition of that, a number of Kickstarter schemes were identified to 'kickstart' delivery of the plan with a focus on improving health

equity, exemplifying the MMF principles and building momentum for the plan's delivery whilst the detail of the broader approach takes shape.

- 1.5 A report on the Kickstarter schemes was provided to the Health and Wellbeing Board in January 2023:
 - i) Improving Health Equity for Children and Young People - children's element
 - ii) Early Help for Adults Experiencing Multiple and Complex Disadvantage. This report will provide a progress update on the Improving Health Equity for Children and Young People – children's element

2.0 Overview of Children's Kickstarter model

2.1 In the period between 2017 and 2019, the attainment gap in children achieving 'Good Level of Development' at the end of the Early Years Foundation Stage between Manchester and Greater Manchester (GM) and the wider North-West (NW) varied between 1-3%. Post-COVID the attainment gap between Manchester and GM increased to 8% and the attainment gap increased to North West to 9%.



2.2 In 2022, pupils attaining a 'Good Level of Development at the end of Early Years Foundation Stage in Manchester remained lower than GM, NW and England, and experienced a larger reduction between 2019 and 2022:

- Pupils eligible for Free School Meals had the lowest levels of attainment (47%) and experienced a decrease of 13% between 2019 and 2022.
- Asian Indian children saw largest decrease of any ethnic group between 2019 & 2022 of -24%. In this cohort children eligible for FSM performed the worst
- In Asian Pakistani and Asian Bangladeshi groups having English as an additional language was the biggest influence on performance
- Children with English as an additional language saw largest drop - also seen in Other Black African groups

2.3 This data presented a number of concerns:

- Manchester children (now in Year 3), would spend longer in school trying to catch up compared with their peers elsewhere. This was likely to impact on their overall educational outcomes, access to opportunities and general wellbeing in the future.
- Children in the early years would be significantly behind their peers. This was due partly to a lack of access to early education and services during and just after the pandemic.
- The number of children presenting in EYFS with significantly delayed development led to an increase in requests to the Local Authority for Education Health and Care plans (EHCPs) as well as referrals to specialist services such as speech and language therapy and CAMHs
- Some children with developmental delay as a result of the pandemic were being incorrectly identified as having a special educational need – this has a long-term impact on the child and also impacts on increased demand for services

2.4 In order to address these issues, a three-tiered approach (intensive, targeted and universal) to holistic support for children and families was designed.

Intensive support:

- 10 schools (GLD under 34%)
- Multi-agency taskforce
- Implementation from April 2023

Targeted support:

- 42 schools (GLD under 50%)
- Direct advice and support service
- Online launch beginning of July and implementation September 2023

Universal support:

- Access to drop-ins, training, advice and events provided by Speech and Language Therapy and Educational Psychology
- Early Years outreach workers
- Summer transition read

2.5 The Children's Kickstarter links closely to the principles of Making Manchester Fairer:

- Proportionate universalism and focus on equity

Via the Kickstarter the schools and therefore children and families with the most need received additionality.

- Respond to and learn from impact of COVID-19
The Kickstarter directly responded to the presenting need in Manchester schools as a result of the pandemic.
- Tailor to reflect the needs of Manchester
The scheme was designed to reflect the needs of our communities and our children within them.
- Collaboration, creativity and whole system approach
The scheme brought together schools, professionals and other services within MCC and beyond to collaborate in the best interests of our children and communities.
- Monitor and evaluate to ensure we are Making Manchester fairer – narrowing gaps within Manchester as well as regional and national averages

As seen in the PowerPoint Appendices, interim evaluation of the scheme shows it has been effective in narrowing gaps within Manchester. A full evaluation will be available in autumn 2024.

- Take a life course approach with action on health inequalities starting before birth and right through to focus on ageing and specific needs of older people

The scheme takes action on health inequalities on entry to school with the aim of de-escalating need.

- 2.6 Children's Kickstarter scheme proposal was formally approved by the MMF Board in July of 2023, however due to education timetables implementation of small but essential elements of the scheme began in April 2023. Leadership of the Kickstarter sits within the Children's & Education department.

3.0 Summary and Recommendations

- 3.1 Early evaluation indicates that the Children's Kickstarter has had a substantial impact in response to the impact of COVID-19 on children 7 years and under.
- 3.2 As a result of this, a second year of the project has been jointly funded by Public Health and Children's & Education.
- 3.3 The next phase of the project will extend intervention to include Private, Voluntary & Independent (PVI) settings in addition to primary schools. Support will be offered to 44 primary schools and 40 PVI settings.
- 3.4 In 2024/25 there will be an enhanced focus on Speech Language and Communication Needs (SLCN) and Social, Emotional Mental Health needs.
- 3.5 Schools and settings have been identified using 'Towards a Balanced System' analysis prediction of SLCN need in the city and deprivation indicators.
- 3.6 The second phase of the project will also respond to needs identified in Year 1 including joint working with Voluntary and Community Sector groups and organisations to examine how we might overcome cultural barriers affecting

school readiness in some communities and to ensure that families are claiming all the benefits to which they are entitled.

- 3.7 Learning from this work will feed into ongoing work around the commissioning of Speech and Language Therapy in Manchester.

4.0 Appendices

PowerPoint - MMF Children's Kickstarter Report Slides