

PART 8

MANAGEMENT STRUCTURE

Management Structure

Full Members of the Strategic Management Team (SMT)*

- Chief Executive
- Deputy Chief Executive
- City Treasurer
- City Solicitor
- Strategic Director (Children’s and Education Services)
- Executive Director of Adult Social Services
- Strategic Director (Growth and Development)
- Strategic Director (Neighbourhoods)
- Director of Population Health and Wellbeing
- Assistant Chief Executive

Chief Officers

- The full members of SMT

Statutory Officers

- Head of Paid Service - Chief Executive
- Chief Finance Officer - City Treasurer
- Monitoring Officer - City Solicitor
- Director of Children’s Services - Strategic Director (Children’s and Education Services)
- Director of Adult Social Services - Executive Director of Adult Social Services
- Director of Public Health - Director of Population Health and Wellbeing
- Deputy Chief Finance Officer - Assistant Director (Corporate Finance)
- Deputy Monitoring Officer - Deputy City Solicitor
- Scrutiny Officer - Governance and Scrutiny Support Unit Manager

*While other senior officers may attend SMT on an occasional or regular basis, only the listed officers are considered full members of SMT for the purposes of Part 8 of the Council’s Constitution.

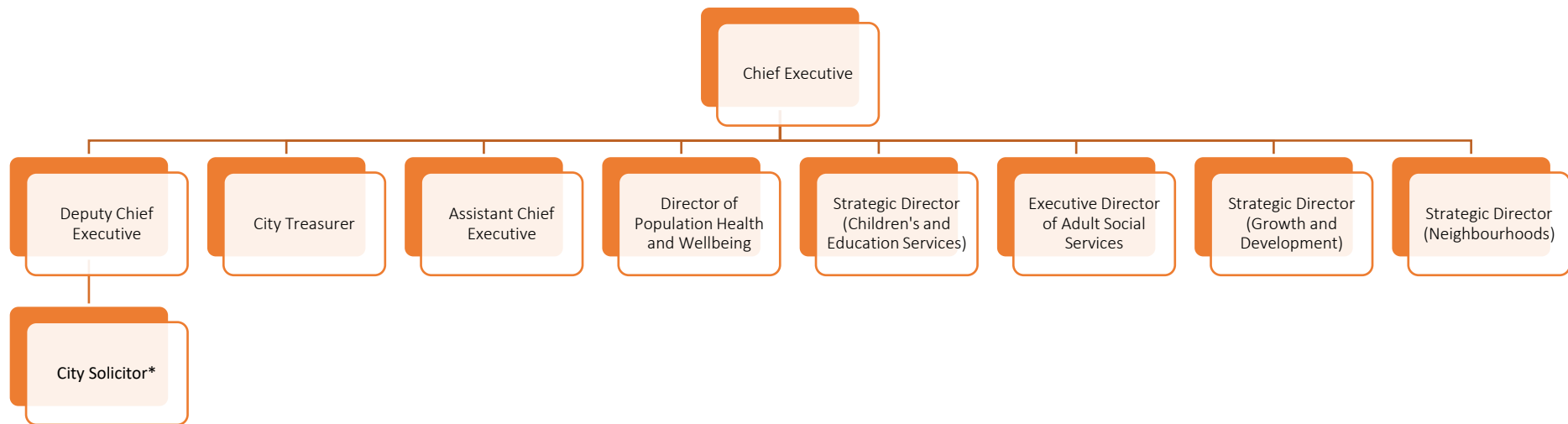
Deputy Chief Officers/Heads of Service

Directorate/Division	Deputy Chief Officer/Head of Service
Corporate Core: Deputy Chief Executive's Division	City Solicitor** Director of Human Resources, Organisational Development & Transformation Director of Capital Programmes Director of ICT Director of Transformation <i>**The City Solicitor also has a direct reporting line to the Chief Executive, in respect of statutory Monitoring Officer functions.</i>
Corporate Core: City Solicitor's Department*** <i>***The City Solicitor's Department is part of the Deputy Chief Executive's Division</i>	Deputy City Solicitor Head of Strategic Communications Electoral Services Corporate Delivery Manager Head of Registrars and Coroners
Corporate Core: City Treasurer's Division	Assistant Director (Corporate Finance) Directorate Head of Finance Directorate Head of Finance Head of Audit and Risk Management Head of Commissioning Governance, Assurance and Initiatives Head of Finance Head of Integrated Commissioning and Procurement
Corporate Core: Assistant Chief Executive's Division	Head of City Policy Head of Public Intelligence and Performance Head of Reform and Innovation
Neighbourhoods	Director of Highways Director of Housing Operations Director of Neighbourhood Delivery Director of Communities
Adult Social Services	Deputy Director of Adult Social Services Assistant Director (Learning Disability, Transition and Complex Needs) Assistant Director (Hospitals, Integrated Contacts and TEC)

	Assistant Director (Neighbourhoods and Safeguarding)
Population Health & Wellbeing	Assistant Director of Public Health/consultant Assistant Director of Public Health/consultant Assistant Director Integration and Population Health Strategic Head of Health Intelligence
Children's & Education Services	Deputy Strategic Director Director of Education Assistant Director of Safeguarding and Practice Improvement Strategic Lead Commissioning
Growth and Development	Assistant Director Major Regeneration Director of City Centre Growth and Infrastructure Director of Development Director of Inclusive Economy Director of Planning, Building Control and Licensing

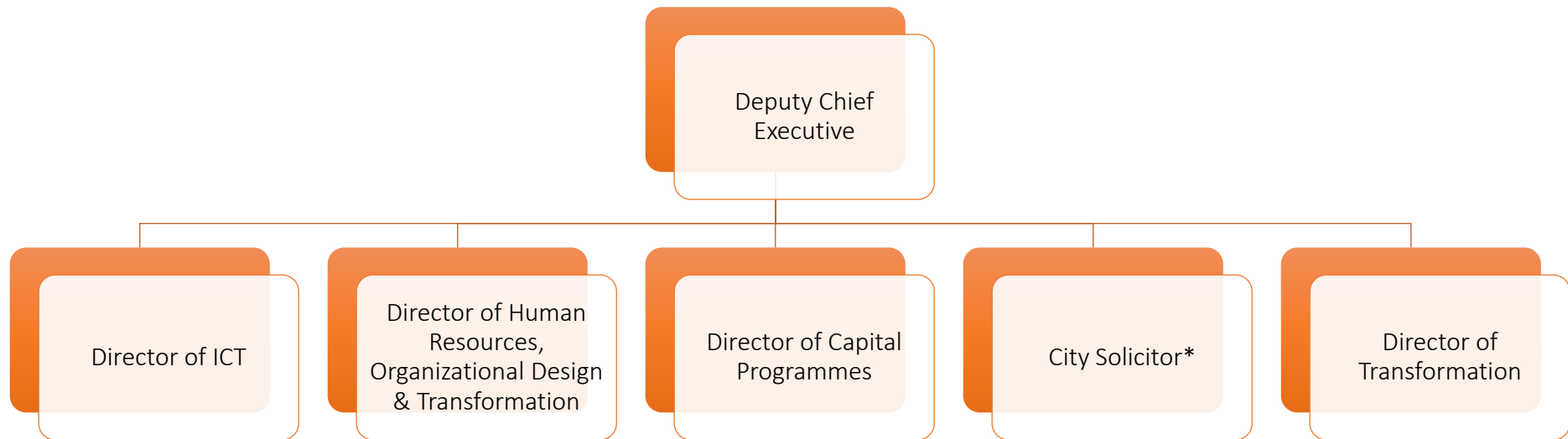
Additional information on the Council's structure is published within the 'Open Data' section of the Council website in accordance with the DCLG Code of Recommended Practice on Data Transparency.

Full Members of the Strategic Management Team (SMT)



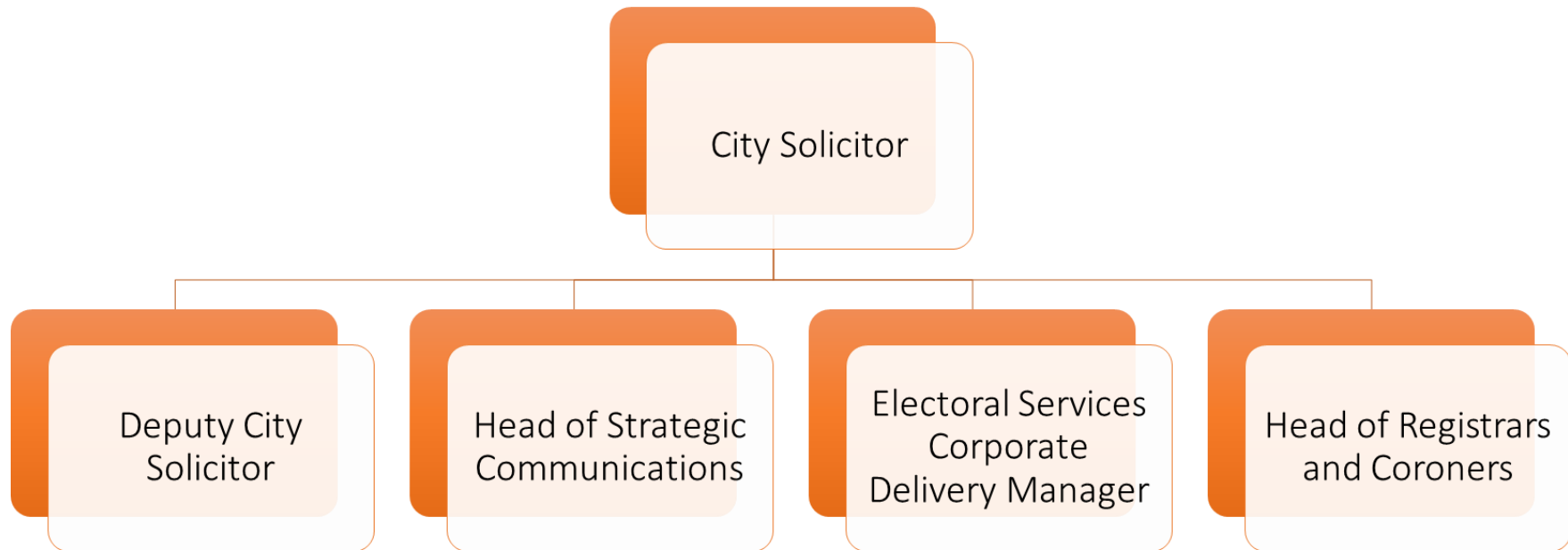
* The City Solicitor reports to the Deputy Chief Executive, but also has a direct reporting line to the Chief Executive in respect of statutory Monitoring Officer responsibilities.

Corporate Core: Deputy Chief Executive's Division



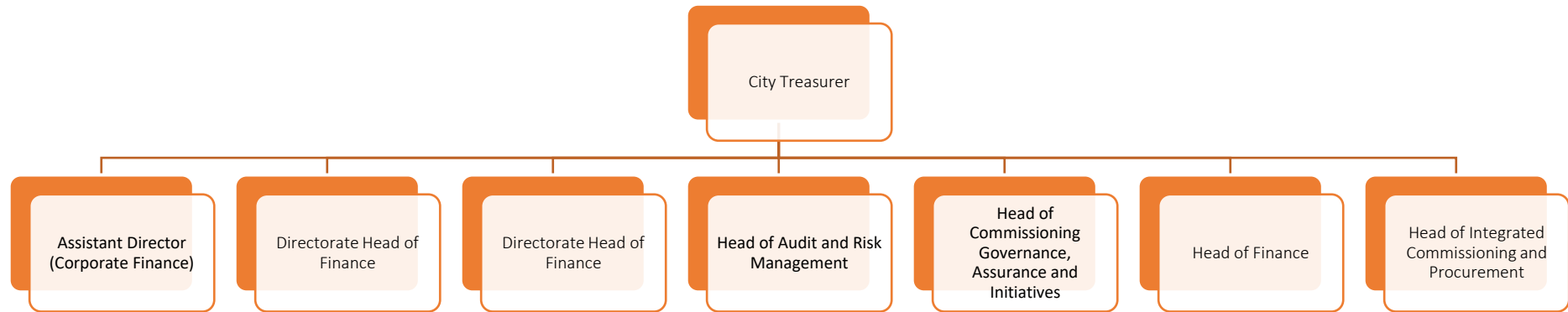
* The City Solicitor reports to the Deputy Chief Executive, but also has a direct reporting line to the Chief Executive in respect of statutory Monitoring Officer responsibilities.

Corporate Core: City Solicitor's Department*

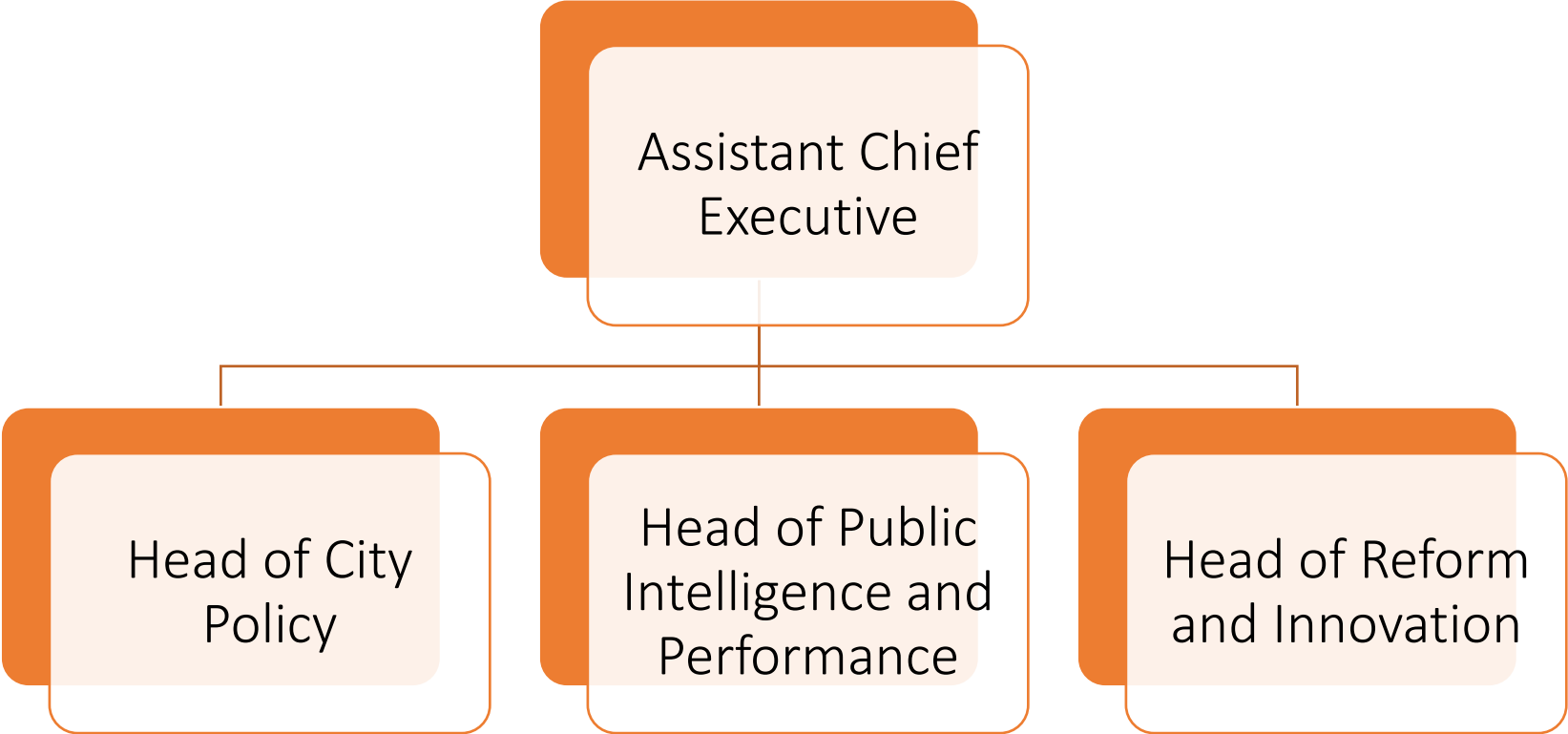


* The City Solicitor's Department is part of the Deputy Chief Executive's Division of the Corporate Core.

Corporate Core: City Treasurer's Division



Corporate Core: Assistant Chief Executive's Division



Neighbourhoods



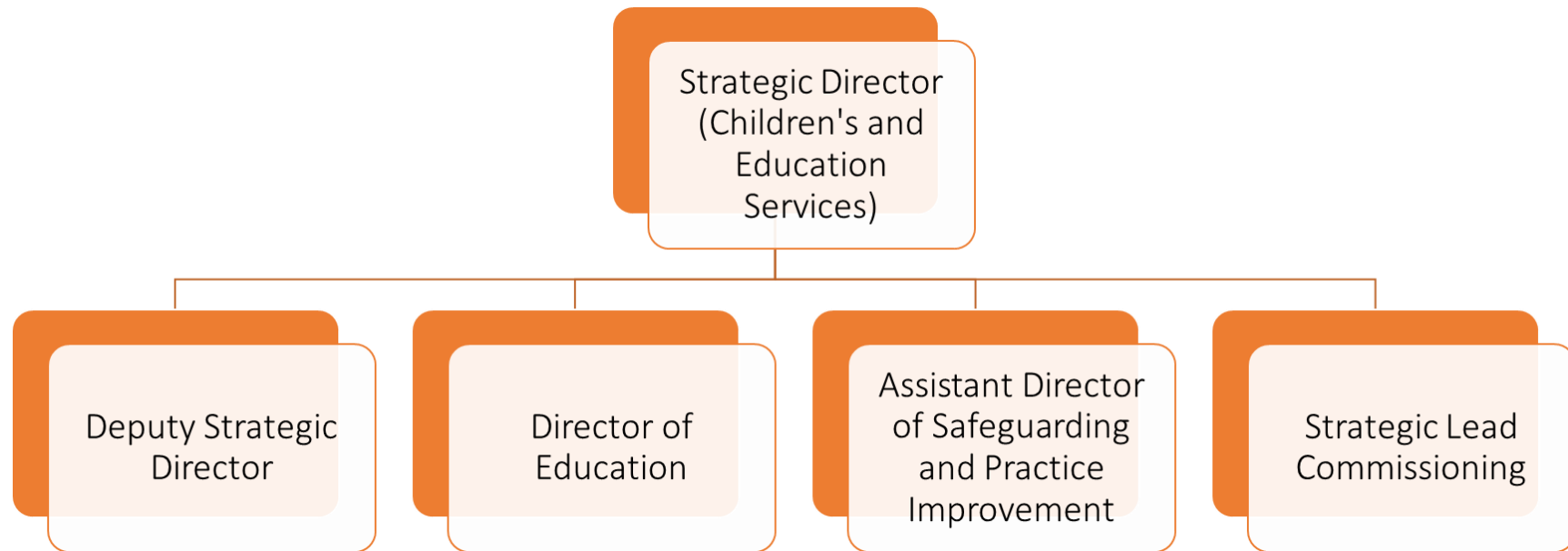
Adult Social Services



Population Health and Wellbeing



Children's & Education Services



Growth and Development

