

COVID-19 Update Communities and Equalities Scrutiny Committee

Dr Cordelle Ofori, Consultant in Public Health
Shefali Kapoor, Head of Neighbourhoods MCC

22nd June 2021

COVID-19 Vaccination programme update

9 June 2021

COVID-19 Vaccination Programme

Summary

- Covid-19 vaccination coverage continues to increase rapidly in Manchester with **288,914** people having received the first dose of the vaccine as at 6 June 2021. Of this number, **170,446** have now received a second dose as well.
- This combination of providing first and second doses means that over the last month we have delivering the **highest numbers of weekly doses** since the beginning of the programme. Last week (28 May – 3 June) saw **25,929** vaccinations given.
- Partnership working remains at the heart of the programme with MHCC, MCC, MFT and MLCO working together, supported by c. **3000** local people who have volunteered to play their part.
- The last two months has seen us delivering our **Spring action plan** to increase coverage in those parts of the city where it was lowest, and to continue to reduce the gap in coverage between different communities in the city.
- Over the last week, we have been focussing further on inviting people from those wards at risk from the Delta variant.

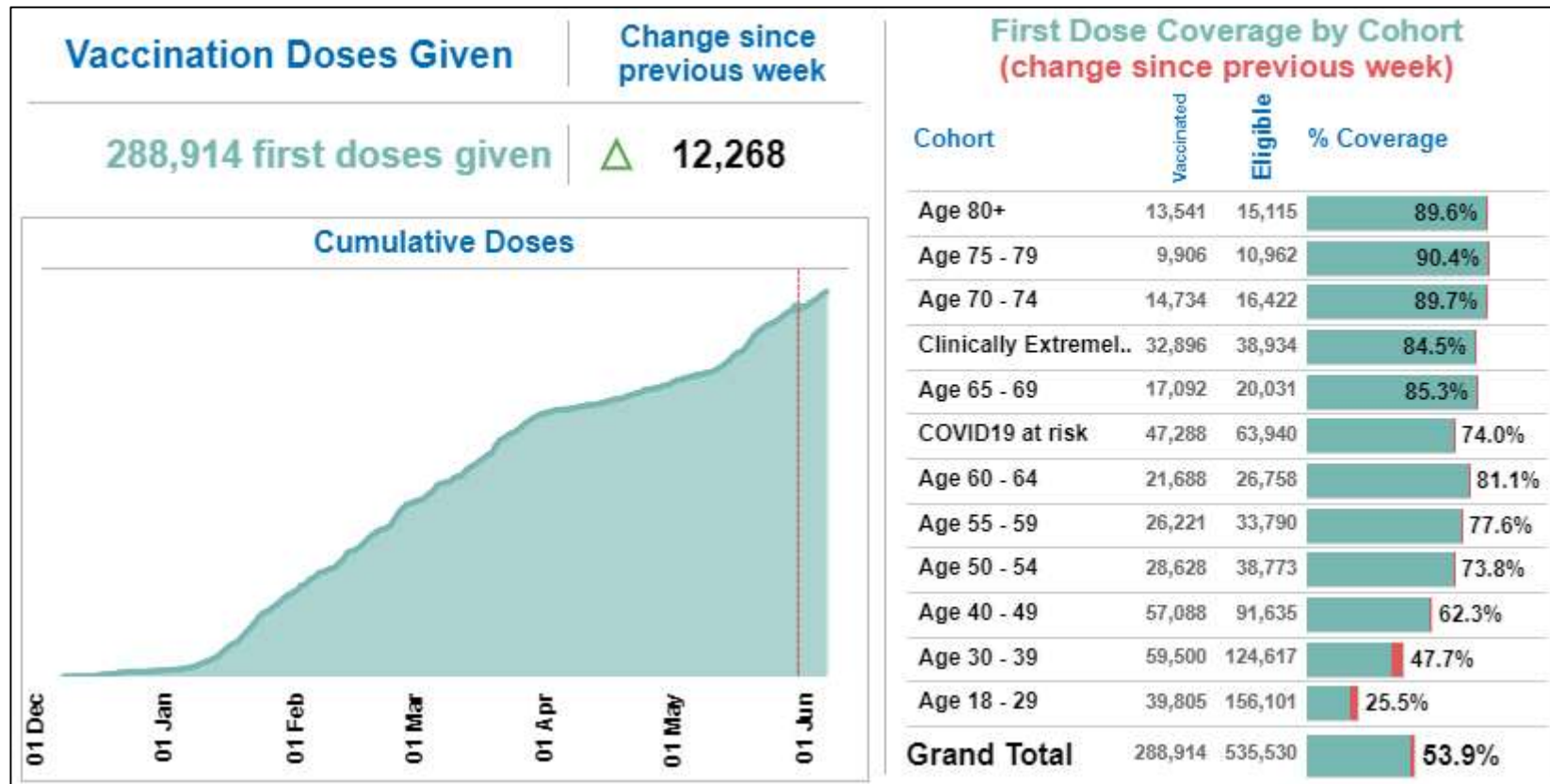
COVID-19 Vaccination Programme

Manchester population summary

- Just under 50% of the population of Manchester is aged under 25 – higher than the average for England as a whole (Source: ONS Mid-Year Estimates)
- Manchester is the 6th most deprived local authority in England. Around 43% of areas within the city are classed as being in the most deprived 10% of areas in England (Source: IMD 2019)
- The proportion of the population from a non-White British ethnic group is twice the average for English local authorities as a whole. The number of different ethnic groups living in Manchester is higher than any other UK city outside of London (Source: 2011 Census) .
- In 2019, just over a quarter of Manchester residents are estimated to have been born outside of the UK and just under 1 in 5 were non-UK nationals (Source: ONS Annual Population Survey)
- It is estimated that there are over 200 languages spoken in the city.
- Life expectancy at birth for both men and women in Manchester is the 5th lowest in England - a boy born in Manchester can expect to live over 8 years less than a boy born in the most affluent parts of England. A girls can expect to live around 7 years less.

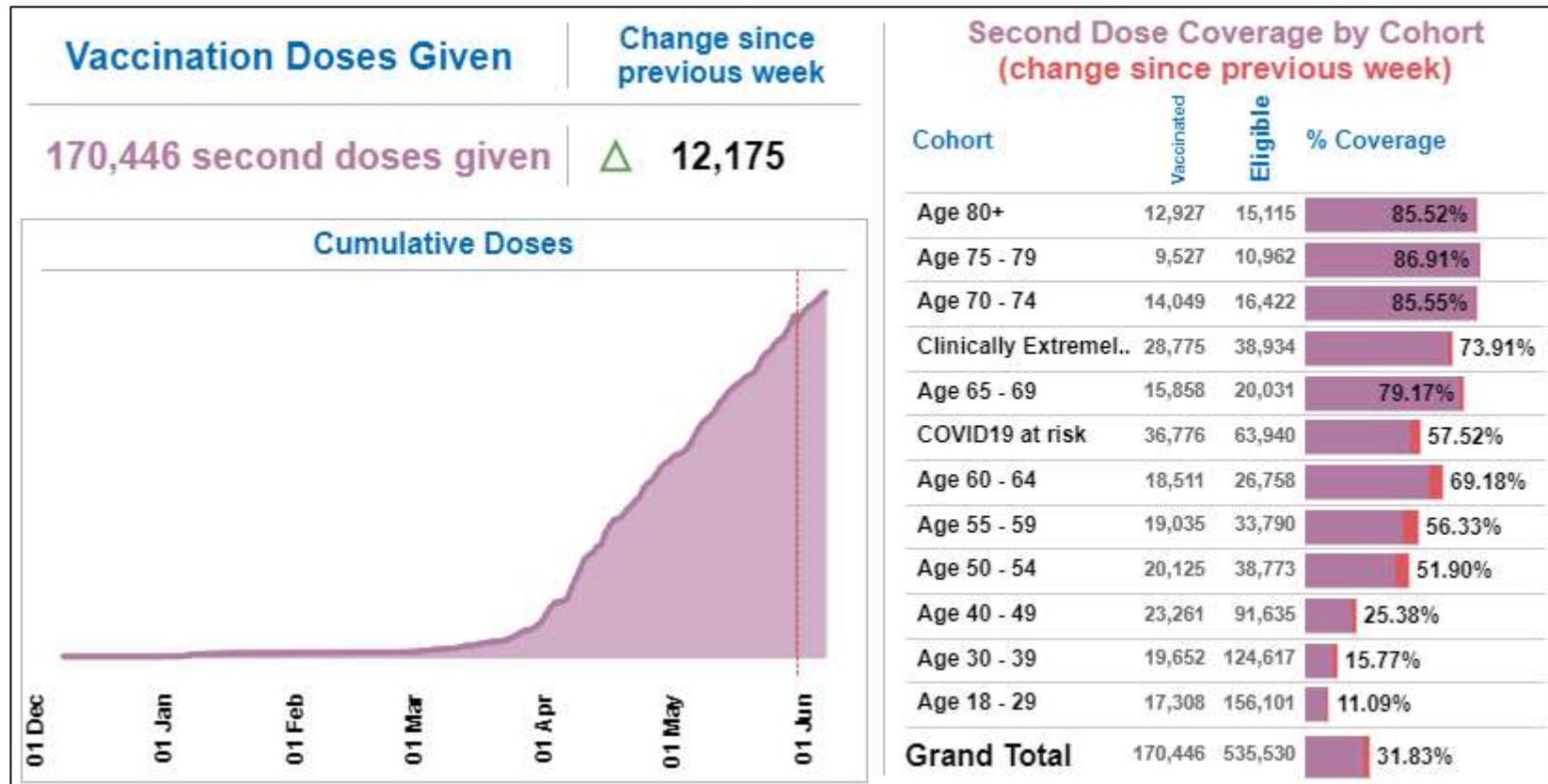
COVID-19 Vaccination Programme

First dose vaccine coverage as at 6 June 2021



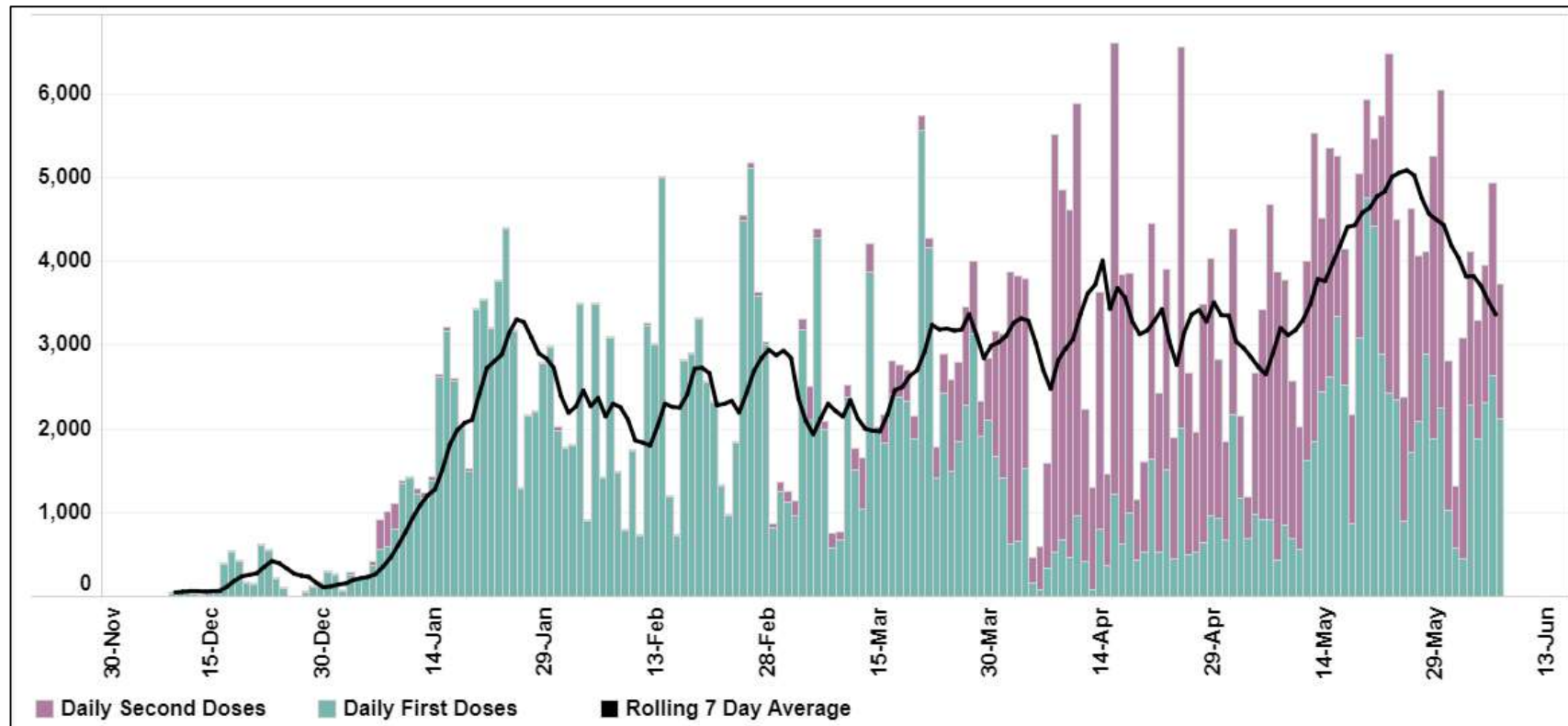
COVID-19 Vaccination Programme

Second dose vaccine coverage as at 6 June 2021



COVID-19 Vaccination Programme

Daily vaccination doses given from programme outset



COVID-19 Vaccination Programme

Targeting inequalities – Cohorts 1 - 9, last 2 weeks

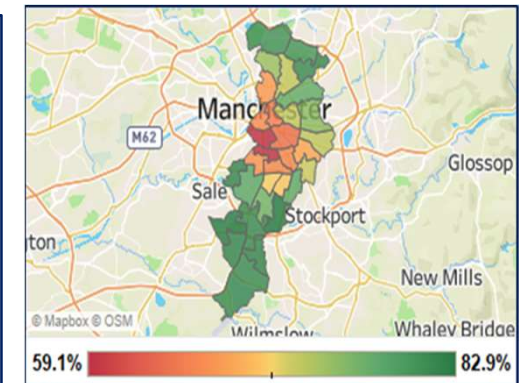
We aim for there to be no difference in coverage between white patients and those patients of other ethnic backgrounds. The table below tracks the difference, with a lower difference highlighting greater equality.

Ethnicity	Difference in Coverage from White Patients: 21 May	Difference in Coverage from White Patients: 04 Jun	Change
Arab	21.0%	19.1%	-1.9%
Any other Asian background	16.2%	15.0%	-1.1%
Pakistani	11.8%	10.7%	-1.1%
Bangladeshi	2.9%	1.9%	-1.0%
Any other ethnic group	21.9%	20.9%	-1.0%
Indian	3.5%	2.5%	-1.0%
White and Black African	23.8%	22.9%	-0.8%
Any other Black, African or Caribbean background	29.0%	28.2%	-0.8%
African	19.0%	18.3%	-0.7%
White and Asian	11.3%	10.8%	-0.5%
White and Black Caribbean	28.0%	27.4%	-0.5%
Any other Mixed or Multiple ethnic background	22.8%	22.3%	-0.5%
Declined to provide ethnicity status	14.3%	13.9%	-0.4%
Chinese	8.4%	8.3%	-0.1%
No record of ethnicity status	33.8%	33.9%	0.1%
Caribbean	25.7%	26.0%	0.3%

COVID-19 Vaccination Programme

Coverage by electoral ward – Cohorts 1 - 9, 3 June 2021

Ward	Vaccinated	Eligible	% Coverage (increase from 2 weeks ago)	Ward	Vaccinated	Eligible	% Coverage (increase from 2 weeks ago)
Didsbury East	5,197	6,277	82.8%	Gorton and Abbey Hey	5,472	7,526	72.7%
Brooklands	4,020	4,887	82.3%	Harpurhey	5,541	7,634	72.6%
Chorlton	4,560	5,601	81.4%	Ancoats and Beswick	3,124	4,305	72.6%
Baguley	5,584	6,863	81.4%	Levenshulme	5,033	6,977	72.1%
Sharston	5,415	6,668	81.2%	Old Moat	3,679	5,211	70.6%
Northenden	5,250	6,488	80.9%	Withington	3,328	4,736	70.3%
Moston	6,054	7,484	80.9%	Longsight	5,243	7,672	68.3%
Woodhouse Park	5,357	6,644	80.6%	Cheetham	4,209	6,229	67.6%
Higher Blackley	5,672	7,077	80.1%	Whalley Range	3,996	5,946	67.2%
Charlestown	5,696	7,146	79.7%	Fallowfield	2,962	4,470	66.3%
Chorlton Park	5,689	7,316	77.8%	Deansgate	1,061	1,602	66.2%
Burnage	5,827	7,505	77.6%	Rusholme	3,649	5,552	65.7%
Miles Platting and Newton ..	5,983	7,729	77.4%	Piccadilly	1,183	1,820	65.0%
Didsbury West	4,611	6,023	76.6%	Ardwick	4,070	6,360	64.0%
Clayton and Openshaw	5,507	7,315	75.3%	Moss Side	3,911	6,602	59.2%
Crumpsall	4,747	6,387	74.3%	Hulme	2,734	4,636	59.0%

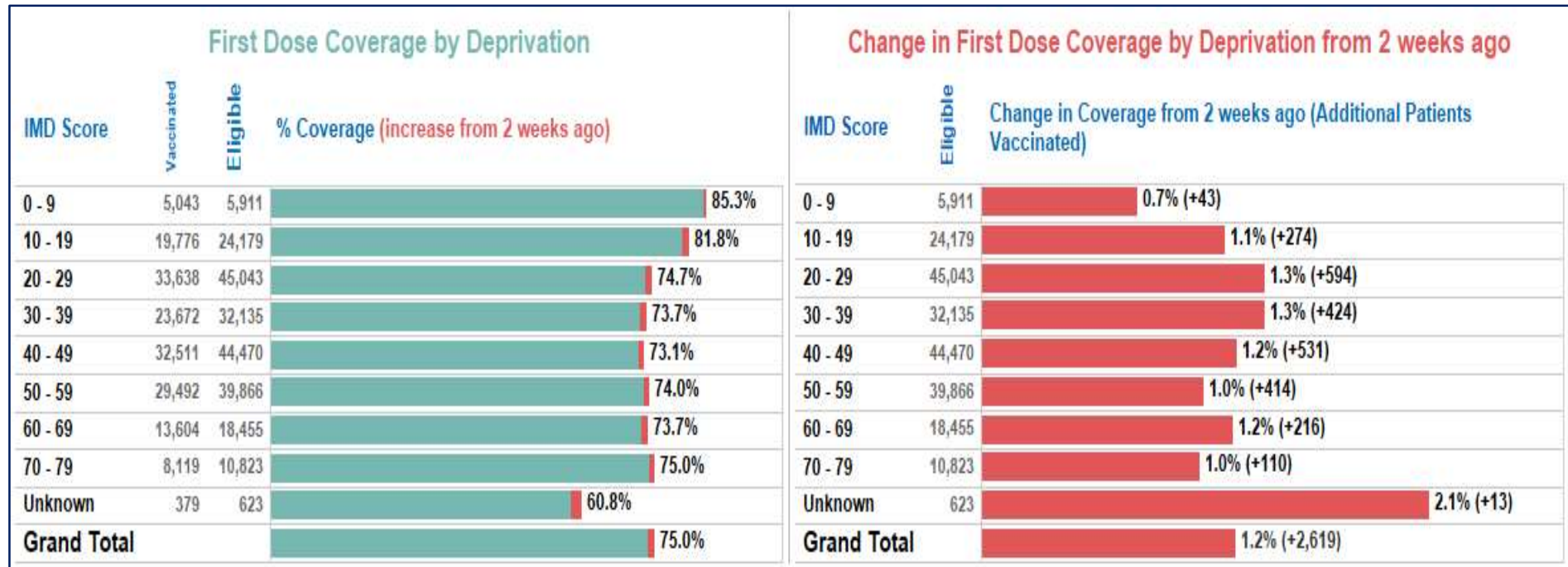


Manchester GP records have been used to identify addresses. Ward residents not registered with a Manchester practice will therefore not be included in these figures

COVID-19 Vaccination Programme

Targeting inequalities – Deprivation: Cohorts 1 - 9, 3 June 2021

Indices of Multiple Deprivation (IMD) rank each Lower Super Output Area (LSOA) based on their level of deprivation. The higher the deprivation score, the higher the level of deprivation.



COVID-19 Vaccination Programme

Improving access to increase coverage



COVID-19 Vaccination Programme

Examples of communications and engagement activity

Bespoke tailored and targeted communications

Neighbourhood specific information, designed with Sounding Board, disseminated through partners' communications channels. Activities include:

- Conversations with community leaders and residents particularly with the Black African community;
- Imams and Community Leaders (including volunteers) actively engaged in promoting key messages with GP support;
- Engagement with homeless accommodation providers;
- Coverage in community press and radio and information produced in a range of languages.
- Engagement with schools

Care home survey work

A survey for care home staff has been launched. It seeks views of staff who have both had their vaccine – to see what influenced them; and those who have so far declined to book their vaccine – to see what might be a barrier that we can help influence.

It also includes some demographic information to allow us to look at other factors

The survey launched on 22 April and has received an encouraging 150+ responses with in the first few hours of circulation.

Webinars have been held with homes with less than 70% staff vaccinated.

'Operation Engage'

Targeted door knocking in Cheetham and Crumpsall, and Moss Side has been carried out, led by front line staff in the community.

Volunteers identified by the Health Development Coordinators will carry out the work, with support from multi faith organisations, frontline workers and MLCO and MCC neighbourhood teams.

They are seeking to engage with those who have not yet responded to contact, or have been uncontactable to date, and link them up with a vaccination offer.

12

Volunteer Support

- Volunteers have played an extremely important role in enabling vaccination centres to operate.
- As of Monday 31 May, the amazing people of Manchester have volunteered over 70,487 hours of their time to support the running of the 8 Primary Care Network vaccination sites. They have also supported the delivery of additional outreach vaccination clinics at local supermarkets, temples and community venues.
- Over 3,000 volunteers have been recruited to the vaccination programme.
- From June volunteers will continue to be recruited via the NHS Good Sam App

COVID-19 Vaccination Programme

Communications snapshot

